

CAM PARISH COUNCIL NEWSLETTER

NOVEMBER 2023

Christmas is coming!

CHRISTMAS is set to sparkle in Cam when the lights are switched-on during a fantastic fun-filled community event on Saturday 25 November.

The lights in the trees around Noel Lee Way and along the High Street will be switched on at 4.30pm, with an afternoon of entertainment running from 2pm – 5pm.



Cam's Christmas Lights Switch On Event map

Saturday 25 November
2.00 - 5.00pm

St Bart's Church
Children's activities

Visit the Children's corner St Bart's Church

Play and have fun with World Jungle

world jungle

Nikki's DOORSTEP SANDWICH BAR

Road closed



Dursley Male Voice Choir and Amy Addle dance troupe

High Street

check out the vintage tractors

Ride the ponies to Rackleaze nature area

Craft Market
at the Winterbotham Memorial Hall



Browse the stalls in the Memorial Hall and along High Street

Road closed

SALT & VINEGAR FISH BAR

Take a selfie in the giant snow globe



Lights switch on at 4:30pm

Put a star on the tree!

Chapel Street

Fun Fair
in small car park

Have fun at the fair!

DURSLEY RUNNING CLUB

Follow Dursley Running Clubs Treasure Map

TESCO

Visit Father Christmas's Grotto in the Parish Council Office

Santa's Grotto
At Cam Parish Office
Organised by Hopton School House

THE MEMORY TREE



Cam Parish Council
Event control centre



L. W. Clutterbuck
Independent Family Funeral Director



A fun-fair will be set up in the car park on Noel Lee Way and children can visit Father Christmas in his enchanting grotto in Cam Parish Council offices. Giant pavement games, including a huge, festive snow globe which people can climb into to have their photographs taken, will be set up on the High Street. More seasonal attractions include enchanted mini-reindeer rides, a light show by World Jungle and a vintage tractor display.

Children's activities, including a children's corner, will be on offer at St Bartholomew's Church. There will be a host of delicious food to tempt the tastebuds.

Seasonal music will be provided by the popular Dursley Male Voice Choir and festive spirits will rise with a performance by a Christmas dance troupe. There will be a memory tree outside Tesco where people can remember loved ones by putting a star onto the tree.

Beautiful gifts will be on offer at a Christmas Craft Market held in Cam Memorial Hall and there will also be outdoor stalls along the High Street.

The High Street will be closed on 25th November from 12pm until 6pm for the duration of the event plus added time to set up and break down. This is to ensure everyone's safety during the community event. The High Street will be closed just after The China Chef takeaway to the roundabout by Tesco.

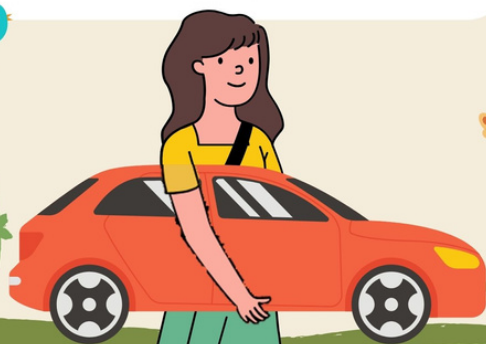
Manor Avenue will be the alternative route and traffic marshals will help residents and visitors and re-direct vehicles as needed. Heavy Goods Vehicles will be asked to use the A38 and B4066 for access to Cam.

DITCH THE CAR, IT'S NOT FAR

There is limited parking at this event

Walk more; drive less

Disabled parking available



JOIN US FOR CAM'S CHRISTMAS LIGHTS SWITCH ON

**SATURDAY 25TH NOVEMBER
CAM HIGH STREET
2.00PM - 5.00PM**

ENCHANTED MINI REINDEER RIDES
DURSLEY MALE VOICE CHOIR
DELICIOUS FOOD
GIANT SNOW GLOBE
FUN FAIR

CHRISTMAS CRAFT MARKETS
CHILDREN'S CORNER
CHRISTMAS DANCE TROOP
SANTA'S GROTTO
FESTIVE TREASURE HUNT
GAMES & ENTERTAINMENT

Cam Parish Council





is proud to announce the return of its

Christmas Giving Tree

in partnership with GL11 Community HUB



GL11
community
hub

-  Call into Cam Parish Office, 4 Noel Lee Way and collect a tag from the tree
-  The tags have a range of gift options such as sweet treats, toys and toiletries for a range of age groups.
-  Purchase a gift and wrap it - remembering to add the tag so we know what's inside!
-  Return the gift to either the Parish Office or GL11 by Friday 8th December

All of the gifts collected will be donated to GL11 who will distribute them to local families

CAM NEEDS GARDENING VOLUNTEERS!

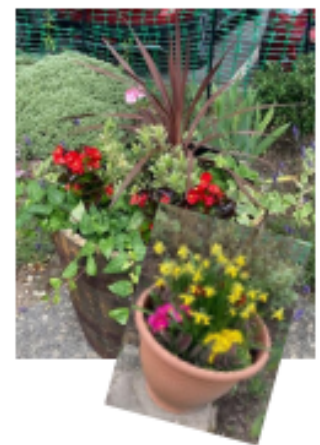
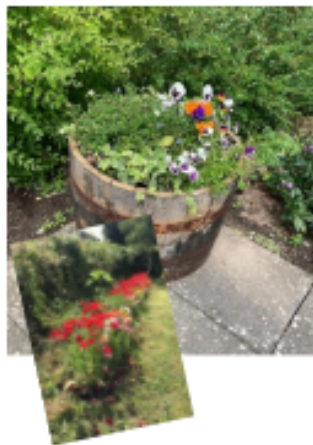


BLOOMING CAM meet every Wednesday at 2pm outside Cam Parish Council Offices, Noel Lee Way, Cam.

You don't need to be an expert! We're a friendly group that enjoys gardening and keeping the centre of Cam tidy and colourful.

NEW VOLUNTEERS ALWAYS WELCOME

Ring Jo Lewis on 01453 548884 for more information
or email info@camparishcouncil.gov.uk



Help make Cam beautiful next Spring!

Gardening volunteers are needed for a morning of bulb planting.

Meet at 9.30am on Tuesday 7 November at Cam Parish Council offices. Please bring your own gardening gloves, trowels will be provided!

Contact Jo Lewis at Cam Parish Council on info@camparishcouncil.gov.uk or 01453 548884 to register.

GEORGE THE POPPYMAN

A symbolic handmade poppy man who is a regular sight around Cam during Remembrance commemorations is looking for volunteers to help move him around the village.

George, the life-sized Army veteran made of red felt poppies, and his horse, Flanders, made of purple poppies, have been adopted by Cam Parish Council after their creator, Dave Denning, decided to hand over the mantle. For the past five years Mr Denning has been putting George and Flanders in different positions around Cam during November to raise awareness of the Royal British Legion's poppy appeal but has now decided it's time for others to continue George's journey.

Mr Denning, an Army veteran, said he made George because his daughter had made a poppy man to sit in Dursley and he wanted to have the same in Cam. He said: "I started off with a wire frame which I wrapped in cling film and then filled with foam. All the felt poppies were cut out individually. The boots were the biggest amount of work because they belonged to my son-in-law and were caked in concrete! Flanders was made in honour of the animals killed in war. He's a child's toy horse which my daughter covered."

George and Flanders now live happily at Cam Parish Council but volunteers are needed to put them out each morning for about two weeks during the Remembrance commemorations and take them inside again each evening. Volunteers are also needed to help string woollen poppies around Cam at the beginning of November.



Alongside George and Flanders, Cam Parish Council is looking for volunteers to decorate the flower beds and bushes at the Cam Pitch and Hopton Green War Memorials with knitted and crocheted poppies.

Please contact Jenny Walkley, clerk of Cam Parish Council, on 01453 548884 or clerk@camparishcouncil.gov.uk if you are able to help.



Interested in engaging young people to challenge traditional park and recreational space design?

Cam Parish Council is looking for a creative youth consultant to engage with the young people of Cam to gather, design and develop ideas for park improvement at Jubilee Playing Field with a specific focus on young people.

Having invested more than £100,000 in play areas for toddlers and infants, the Parish Council would like to further invest in the young people of Cam.

Cam Parish Council is funding the consultation phase for this project. The aim of the consultation phase is to understand what the young people of Cam would like to see developed at our local park.

We are on the hunt for a youth consultant!

Interested in engaging young people to challenge traditional park and recreational space design?

Scan the QR code below for more information on what we are looking for and fees.



Identifying, engaging and working with a diverse section of young people aged 11 – 17 years in the Cam area, local youth organisations, schools and park users, the successful candidate will be able to gather youth inspired design ideas and space requirements to present to the Council to help shape the development of the teen section of the playing field.

A fee of £1,400.00 including VAT and all travel and associated project costs is being offered for the right person. Workshop sessions may take place outside of the normal working week to include evenings and weekends to maximise reach of consultation. We expect that the successful candidate will creatively engage young people in different settings and times to enable rich feedback to be gathered.

You will present your findings to the council, sharing written and visual feedback created during the sessions.

The successful creative youth consultant is expected to deliver the following by the end of February 2024:

- Leading inclusive and inspiring creative engagement sessions. These sessions will be face to face.
- Keeping records of data collected including responses to a questionnaire designed by young people. The questionnaire/survey designed by young people should be shared via participating young people as much as possible.
- Reports and findings to be presented to Council.

How do we envisage the young people's consultation?

The successful person will:

- Seek out groups where young people attend.
- Make contact with park users.
- Link with schools and the youth centre.
- Reach out via youth platforms.
- Set up and deliver face to face sessions in several local venues, encouraging engagement with the design of the park area.
- Delivery of this community driven design consultation will be carried out in line with the Cam Parish Council Safeguarding Policy, Data Protection Policy and Health & Safety Policy.

Interested? Please send a CV and statement or recent examples of your work along with a proposal (one side of A4).

Ideas for inclusion in the proposal:

- What excites you about this project?
- How will you plan to use 7 days to creatively engage young people?
- Your experience of working creatively with young people.
- Confirmation that you: have the right to work in the UK, hold a current Enhanced DBS check, and an understanding of the importance of your role in safeguarding children and young people, and hold suitable insurance for this project.



Timeline:

Deadline for proposals: Midday
Monday 11 December 2023

Interviews will take place on:
Tuesday 19 December 2023

Please send your application or
any questions to:
projects@camparishcouncil.gov.uk



COUNCILLOR VACANCY It could be you!

In addition to elections next year, there is currently a vacant seat on Cam Parish Council.

If you have time to spare and would like to get more involved in any of the following, please contact the Clerk for more details -

- Help us manage our allotments
- Develop the Rackleaze Nature area
- Have your say on local issues
- Regenerate our play areas
- Influence future planning applications
- Be a community champion

CONTACT THE OFFICE FOR MORE INFORMATION

CLERK, JENNY WALKLEY
01453 548884
CLERK@CAMPARISHCOUNCIL.GOV.UK



Make a difference and join our team

The Recreation and Leisure Committee usually meets on the 3rd Wednesday in each month. It's responsible for -

- Allotments
- Play Areas and equipment
- Amenity Areas/Open Spaces
- Amenity Furniture
- Development of Jubilee Field
- Public Rights of Way

The Planning and Highways Committee usually meets on the 2nd Wednesday in each month. It's responsible for -

- Agreeing recommendations to District Council on all planning applications for Cam.
- Monitoring decisions made by District Council.
- Discussing, monitoring and responding to, as appropriate, strategic planning matters, e.g. monitoring and reporting of public transport issues, provision and maintenance of bus shelters, County Structure Plan, local regeneration proposals etc.
- Monitoring and reporting highway problems.

Upcoming agendas, meeting papers and a record of the minutes can be found on our website.

Parish Councillors		
Ward	Name	Email
East	Stewart Angell	Firstname.surname@camparishcouncil.gov.uk
East	Jonathan Bishop	
East	Ben Walker	
East	Brian Tipper	
East	Ben Wilkes	
East	Mike Grimshaw	
East	Kim Chandler	
West	Mark Morton	Firstname.surname@camparishcouncil.gov.uk
West	Dennis Andrewartha	
West	Jeremy Fowler	
West	Jonathan Fulcher	
West	Miranda Clifton	
West	Tegan Munns	
West	Scott Temlett	
West	Glyn Gough	
West	Vacant	Apply now!
District Councillors		
East	Brian Tipper	Cllr.firstname.surname@stroud.gov.uk
East	Victoria Gray	
West	Christopher Evans	
West	Colin Fryer	
County Councillor		
Cam Valley	Brian Tipper	Brian.tipper@gloucestershire.gov.uk
MP		
Stroud	Siobhan Baillie	3 King Street, Stroud, Gloucestershire, GL5 3DA siobhan.baillie.mp@parliament.uk 01453 759748