



CAM PARISH COUNCIL

Newsletter - November 2022

CAM'S CHRISTMAS LIGHTS SWITCH ON

Saturday 26 November
2.00pm - 5.00pm

Santa's Grotto
Mini Reindeer Rides
Christmas Craft Market
Magical Unicorn
Bouncy Castle
Street Food
Face Painting
Magician
Christmas Carols
Fancy Dress: come as an elf!
Games & Entertainment
Festive Treasure Hunt



Cam's Christmas Lights switch on is back!

It's been a few years but Cam's Christmas Lights switch on community event is back this year.

A temporary road closure will be in place on Saturday 26th November from 1.30pm - 5.00pm. The A4135 High Street from the Junction with Manor Avenue to the roundabout at Noel Lee Way will be closed to make room for mini reindeer rides, a craft market, magical unicorn and lots more!

Keep an eye on our Facebook page for updates and adverts.

Warm HUB office space.

Cam Parish Council office is available for residents needing a warm place to work. Free WI-FI is available as well as hot drinks. Space is limited so please contact the office to book on 01453 548884 or email info@camparishcouncil.gov.uk

SHARED WARM OFFICE HUB

JOIN A WARM COMMUNAL OFFICE HUB IN THE CAM PARISH COUNCIL MEETING ROOM

Availability for W/C Monday 21 November:

Monday 21 November, 09.30am - 3.00pm

Tuesday 22 November, 09.30am - 3.00pm

FREE WI-FI, TEA & COFFEE

For more information, please call us on 01453 548884



Christmas Giving Tree

Cam Parish Council is proud to introduce its Christmas Giving Tree in partnership with GL11 Community HUB.

- * Call into Cam Parish Office, 4 Noel Lee Way and collect a tag from the tree
- * The tags have a range of gift options such as sweet treats, toys and toiletries for a range of age groups.
- * Purchase a gift and wrap it - remembering to add the tag so we know what's inside!
- * Return the gift to either the Parish Office or GL11 by Friday 9th December

All of the gifts collected will be donated to GL11 who will distribute them to local families



Parish Councillor vacancies

An election was called for the one vacant seat in Cam East Ward. This has now been filled unopposed, and we hope the new Councillor settles in shortly.

A vacant seat is available in Cam West. If by 24th November 2022, a request for an election to fill this seat is made to the Returning Officer, at Stroud District Council by TEN electors, an election will be held to fill the vacancy, otherwise the Parish can decide to proceed with a co-option .

For more information, please contact the Returning Officer at Stroud District Council or the Clerk, Jenny Walkley on 01453 548884 or clerk@camparishcouncil.gov.uk

Get involved and make a change

**CALLING ALL
COMMUNITY HEROES**



**YOUR LOCAL
COUNCIL NEEDS YOU!
MAKE A CHANGE
BECOME A COUNCILLOR**

To find out more contact

Jenny Walkley, Clerk on 01453 548884 or email clerk@camparishcouncil.gov.uk

Grand opening of two new Jubilee play areas

Cam Parish Council has opened two new children's play areas at its Jubilee Playing Field in a long-awaited project. The council decided to invest £100,000 to create two separate play areas at its 16-acre site; one fenced play zone for toddler aged children and another unfenced space for junior aged children.

Jubilee Playing Field was a finalist in the Fields in Trust 2013 Inclusion Awards and already had football pitches, a skatepark, outdoor gym equipment and a limited number of play items. Work went on behind the scenes to make sure the work specification for the new play areas covered as much of the wish list demanded by the public as possible.

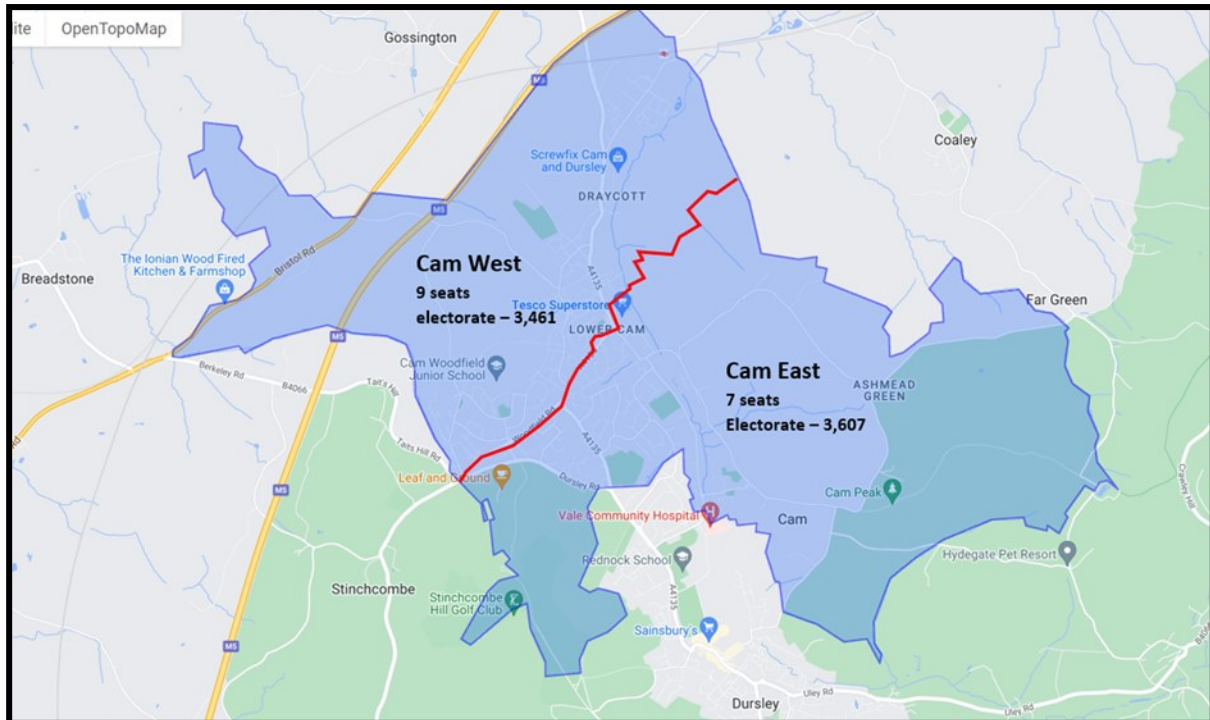
There were a few set backs along the way and the pandemic slowed things down but work was finally completed at the beginning of September. A community fun day was held to celebrate the opening of the fantastic play areas. This was a huge success with crowds of people attending to enjoy the stalls and a community dog show. Cllr Jon Fulcher, Chair of Cam Parish Council, opened the play areas. He said: "Blessed with fine weather and a fabulous local turnout, it was both an honour and a joy to officially open the two new play areas."

The play areas are now being very well used and attention has turned to improving the parking.



Community Governance Review

Stroud District Council has announced that Cam should be included in a small-scale Community Governance Review looking at specific areas of the district.



Cam Parish Council submitted a request to review the number of seats on the council (currently 16 seats) given the substantial amount of growth within the Parish. It does not intend to make any request to amend the Parish boundary.

There are currently two wards within Cam: Cam West (9 seats) and Cam East (7 seats). A working party, initially made up of Councillors will explore options and opinions around increasing the seats for these wards or whether a third ward could be created and where this might sit within the existing Parish boundary. Its preferred option will be discussed by Full Council before being submitted to Stroud District Council for consideration.

More information can be found on the Stroud District Council website: <https://www.stroud.gov.uk/council-and-democracy/elections/community-governance-reviews>



CAM
Parish Council

Need Some Help?
Call: 01453 548884



CAM
Residents
We need your help!

Your Community, Your Say
Have you completed our survey?

Cam Parish Council works hard to provide local services, facilities and activities for the community. So now we want to know – are you happy with them?

With your feedback, we can improve what we do and how we do it and focus on the things that are most important to you. We are reviewing local priorities - and want to know, what do you think the future of Cam needs?

Complete the confidential survey online by scanning the QR code or using this link -
<https://www.surveymonkey.co.uk/r/CAMCOMMUNITY>



 @camparishcouncil.gov.uk

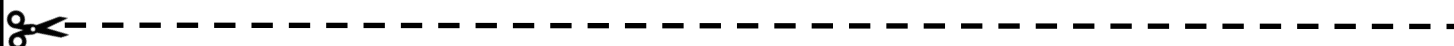
Get in touch with your Councillors

Parish Councillors				
Ward	Name	Email	Landline	Mobile
East	Stewart Angell	Stewart.angell@camparishcouncil.gov.uk		07786 313 220
East	Jonathan Bishop	Jonathan.bishop@camparishcouncil.gov.uk	01453 822 368	
East	Ben Wilkes	Ben.wilkes@camparishcouncil.gov.uk		
East	Brian Tipper	Brian.tipper@camparishcouncil.gov.uk	01453 542 262	07798 741 522
East	Christina Carter	Christina.carter@camparishcouncil.gov.uk		
East	Mike Grimshaw	Mike.grimshaw@camparishcouncil.gov.uk	01453 544 954	
East				
West	Mark Morton	mark.morton@camparishcouncil.gov.uk	01453 368009	07388463218
West	Jonathan Fulcher	Jon.fulcher@camparishcouncil.gov.uk	01453 890 926	
West	Miranda Clifton	Miranda.clifton@camparishcouncil.gov.uk	01453 545 512	
West	Richard Lane	Richard.lane@camparishcouncil.gov.uk		
West	Scott Temlett	Scott.temlett@camparishcouncil.gov.uk		
West	Alex McIntyre	Alex.mcintyre@camparishcouncil.gov.uk		
West	Dennis Andrewartha	Dennis.andrewartha@camparishcouncil.gov.uk		
West	Glyn Gough	Glyn.Gough@camparishcouncil.gov.uk		
West				
District Councillors				
East	Brian Tipper	Cllr.Brian.tipper@stroud.gov.uk		07798 741522
East	Victoria Gray	Cllr.victoria.gray@stroud.gov.uk		
West	Christopher Evans	Cllr.christopher.evans@stroud.gov.uk		
West	Colin Fryer	Cllr.colin.fryer@stroud.gov.uk		
County Councillor				
Cam Valley	Brian Tipper	Brian.tipper@gloucestershire.gov.uk		07798 741 522
MP				
Stroud	Siobhan Baillie	3 King Street, Stroud, Gloucestershire, GL5 3DA siobhan.baillie.mp@parliament.uk	020 7219 4920	

Mailing list

This newsletter is posted on our website and Facebook, with hard copies available at the Parish Office.

Would you like to join our mailing list and receive our newsletter direct to your inbox? If so, send your details to Lucy, Deputy Clerk; admin@camparishcouncil.gov.uk or complete the slip below.



Please add me to the newsletter mailing list

Name..... Email.....