



# **CAM PARISH COUNCIL**

## **ANNUAL REPORTS**

**2019 - 2020**



**Clerk: Mrs Jenny Walkley**

**CAM PARISH COUNCIL**  
**4 Noel Lee Way, Cam, Glos GL11 5PS**

Tel/Fax 01453 548884  
clerk@camparishcouncil.gov.uk  
[www.camparishcouncil.gov.uk](http://www.camparishcouncil.gov.uk)

## Table of reports:

Page 3. Chair's Annual Report, Cllr Christina Carter

Page 10. Planning and Highways, Cllr Brian Whatling

Page 12. Recreation and Leisure, Cllr Fiona Poulter

Page 14. Neighbourhood Development Plan, Cllr Mike Grimshaw

Page 15. County Council and District Council combined Report, Cllr Brian Tipper

Page 18. District Council, Cllr Miranda Clifton

Page 20. District Council, Cllr Paul Denney

Page 21. District Council, Cllr Jessica Tomblin

Page 22. Cam Institute Charity, Dursley United Charity and Woodfield Youth and Community Centre

Page 24. Cam, Dursley & Uley Joint Woodland Management Committee

Page 26. Stinchcombe Hill Recreation Ground Trust

Page 31. Neighbourhood Warden

Page 32. Blooming Cam

Page 33. Cam Sports Club

Page 35. GL11

Page 37. Dursley Welcomes Walkers

Page 39 Youth Service

Page 40. Stroud Youth Council

Page 41. The Door

Page 42. Cam and Dursley Creatives



# **CHAIR'S ANNUAL REPORT – 20/05/20**

## **CHAIR OF CAM PARISH COUNCIL, CLLR CHRISTINA CARTER**

### **Summary**

Cam Parish Council has made many improvements across the board this year, in terms of its systems, productivity and communications with residents.

There have been highs, one of the most significant being the completion of the Neighbourhood Development Plan. There have been lows too. For example, losing Councillors and social media has kept us on our toes also, around issues such as station parking.

One of the biggest events of the year and one Cam Parish Council was very involved with was the discovery of a Roman Villa on one of the fields being developed in Box Road.

### **Contents**

1. Councillors and Committees
2. Neighbourhood Development Plan
3. Planning and Development
4. Roman Villa
5. Local Transport Review
6. Community Areas
7. Policies
8. Community Grants
9. Community Events
10. Blooming Cam
11. Cam Parish Council in the Media
12. Financial Matters
13. Council offices and staffing
14. March 202 and the arrival of Covid 19

## **1. Councillors and Committees**

On 8<sup>th</sup> May 2019 Christina Carter was elected Chair of Cam Parish Council, Cllr Val Lane as Vice Chair, Cllr Fiona Poulter and Cllr Jon Fulcher as Chair and Vice Chair of the Recreation & Leisure Committee and Cllr Brian Whatling and Cllr Mike Grimshaw as Chair and Vice Chair of Planning and Highways. These councillors plus Cllr Miranda Clifton make up the Financial, Policies and General Purposes committee.

Councillors were elected as representatives on outside committees as follows:

Arthur Winterbotham Hall – Cllr Tipper and Clerk

Cam and Dursley Youth Group – Cllrs Clifton and Lane

Cam Institute Charity – Cllr Clifton

Cam Parochial Charities – Cllr Lane

Christmas event committee, Cllr Grocutt, Clifton, Grimshaw and Angell

Stinchcombe Hill Recreation Ground Trust – Cllr Carter

Dursley and District Community Centre – Cllr Angell

Dursley Welcomes Walkers – Cllr Carter

Dursley United Charities – Cllr Clifton

Joint Woodlands Management Committee – Cllrs Carter (later Cllr McGlone) and Grimshaw

Gloucestershire County Council Charter Group – Cllr Bishop

Neighbourhood Development Plan Steering Group – Cllrs Grocutt, Grimshaw, Carter and Sherman.

Safer and Stronger Communities Partnership and other community safety groups – Cllr Bishop

Vale Vision – Cllr Whatling

Woodfields Youth and Community Centre – Cllr Clifton, Cllr Angell

During the year the number of councillors stood at between 14 and 16. Cllr Gordon McGlone was co-opted to Council in May 19 and Cllr Janice Evans in October but between July 19 and Jan 20 four Councillors resigned – Cllr Bryce, Cllr Mills, Cllr Evans and Cllr Lane and more recently Cllr Grocutt. Resignations are not unusual. Being a Councillor is a voluntary job and not always an easy one to balance with other commitments in life. It does mean that to ensure a vibrant and progressive Council we do have to constantly be looking to attract new enthusiastic people to join.

**2. Neighbourhood Development Plan – see report by Chair, Cllr Mike Grimshaw**

**3. Planning and Development – see report by Chair, Cllr Brian Whatling**

## **4. Roman Villa**

Another event that led to several meetings with a developer, Bovis, and a minor sensation within the area, was the discovery of a Roman Villa at their development site in Box Road.

The site had been being worked on by professional Archaeologists for several months but was brought to public notice in November 19.

This caused a lot of interest in the local media – BBC Radio Gloucester and The Gloucestershire Gazette – and had national coverage by the Times and the Guardian.

Social media played its part with a petition of several hundred people being raised against destruction of the site by the developer building over it, and for residents to be able to visit the site.

Meetings attended by the Chair of Cam Parish Council, the Clerk, SDC councillors Miranda Clifton and Jessica Tomblin, Planning officers from SDC, Archaeologists from GCC, the site Archaeologists and management at Bovis resulted in a new plan being put forward by the developer in order to preserve the site. This will mean the site will not be built over but it will be covered in such a way to make it accessible to archaeologists in the future who may come forward with funding to explore it further.

The Clerk office staff and Councillors at CPC were kept busy in February and the beginning of March 20 organising 4 days of hourly tours of the site which were much appreciated by those attending.

## **5. Local Transport Review**

Gloucester County Council's Local Transport Plan Review went under Public Consultation at the end of the year (19).

Cam Parish Council submitted a response in January 20 on approval from the Council of recommendations made by an advisory group made up of Cllrs Carter, Tipper, Sherman and the Clerk. Some of the standout highlights were emphasis on support for greenways and walking paths – we hope this will lend support to the Cam and Dursley Greenway Project – and for the future, a new station south of Gloucester which would alleviate some capacity and parking issues at Cam and Dursley station by handling many of the commuters our station currently does.

## **6. Community areas – see report by Chair of Recreation and Leisure, Cllr Fiona Poulter**

## **7. Policies**

Policies are being reviewed and updated in rotation over the year. One of the changes made was to update the Code of Conduct as advised by SDC's monitoring officer.

Council voted make a Climate Change Declaration Statement. Thanks to Cllr McGlone for guidance on this.

## **8. Community Grants**

Grants of £10000.00 were made to community groups over 2019-20. These were to:

- Kingshill House Ltd
- Cam sports club

- Dursley & District Good Neighbours
- World jungle
- GL11 Community Hub
- Woodfield community centre
- Ashmead Village Hall
- Quarry Chapel
- Cotswold Vale Talking Newspaper
- Cam Traders Association
- Springfield Court Social Fund
- Cam and Dursley creatives
- 3rd Cam Rainbows
- Cam Hopton School association,
- Dursley Welcomes walkers,
- Joint Woodland Management Committee

Council approved providing an extra community grant funding of £10,000 for sustainability projects.

## 9. Events

- i. Scratch and Skate – August:  
This event for young people took place at Jubilee Field and was organised by The Door who provide our Youth Services, World Jungle and the Cam and Dursley Youth Forum. It was a very successful day with the only negative comment being that more people could have come and that more advertising/communication may be required for future events.
- ii. Walking Festival – October:  
Dursley Welcomes Walkers organised its 8<sup>th</sup> and biggest and best Walking Festival for the area ever. While the group is Dursley based Cam Parish Council is represented and there has been a focus in the past few years to ensure a decent number of walks are in Cam.
- iii. Remembrance services - November:  
Cam has War Memorials in Lower Cam and Upper Cam and every year sees a service at both. There was a very big turn out this year and wreaths were laid by the Chair of Council and the Vice-Chair.
- iv. Christmas Lights in November:  
This event was pared back this year due to lack of volunteers. The lights on event was enjoyed by fewer people than previously but the Craft Fayre and Santa's Grotto went ahead and were very popular.

## 10. Blooming Cam

The Council gives an enormous vote of thanks to this voluntary group of gardeners, which includes one of our councillors – Miranda Clifton and Jo Lewis, one of our staff, for transforming the centre of Cam particularly outside the Council and 'Froffy Coffee' buildings and the War Memorial. Their work has really made a difference.

It was heartening to hear that a call for gardening tools brought many donations.

The group's inspiration, local resident, Mike Taylor was interviewed in depth by BBC Radio Gloucester when they visited the area in February 20.

#### **11. Cam Parish Council in the Media**

- i. One of the focuses for this year has been on developing the profile of the Council. This can have the real benefit of raising awareness amongst our residents about what we do and how they can be involved in shaping Cam's future or highlight issues they would like addressed. Councillors are volunteers but all have Cam's interests at heart plus we have highly qualified staff to support those. We want to be seen as a positive force working hard for Cam and for somewhere that is open to all residents.
- ii. Working with the media is one way to get messages out to a wide number of residents and this year Cam Parish Council has featured widely in the Gazette and on BBC Radio Gloucester.
- iii. Cam's very own Roman Villa story actually reached the National Press and BBC Points West.
- iv. Our website and Facebook page has been used more than ever to get our messages out to locals. This becomes more and more important with issues such as development in the area where residents need information about it quickly.
- v. Social media, however, can have its downside and will sometimes run with stories that in some cases can whip up emotional responses that have to be carefully managed. In some cases this can be a time-consuming process.

#### **12. Financial Matters: Audit, Budgets, Precept and Banking – see Clerks report**

Budgets have been produced on a monthly basis and checked by a councillor who are not signatories to the Bank on a rotational basis. Signatories are chairs and vice chairs of committees.

A list of payments is supplied for approval before payments on a monthly basis.

The precept was set at 4.6%.

Audit is underway and we thank our Clerk for her excellent bookkeeping and accountancy skills.

#### **13. Council Office and Staffing**

- i. IT: To achieve everything we do as a Council relies on our small dedicated and well qualified staff team for whom we give thanks. Up to date IT is also a necessity and this year IT support company, Pure MSP, was brought in on a retainer to ensure business continuity when there is a technical problem that can't be solved in house. Pure also set us up with Office 365, oversee security in the system and moved staff and Councillors to dedicated emails.

These changes put us on an even more professional footing and in line with developing and improving CPCs image.

- ii. Branding: Also, to identify staff and Councillors when they make outside visits high visibility jackets and lanyards were purchased with the Councils logo on them. (These were necessary and used constantly when showing people round the Roman Villa).
  
- iii. Income from Council buildings:
  - Income from rental of the Jubilee Pavilion to Cam Everside Football Club has continued.
  - Rental of the Café building has continued with a transferral of lease from Berry Blue to Froffy Coffee, a new owner, in October.
  - Demand for hire of meeting rooms in the Council buildings has been at a good capacity.
  - All streams of income are in jeopardy since the start of the Covid 19 crisis.
  
- iv. Land at side of Council building:

This was purchased from SDC and legally transferred in Nov 19 – thanks to Cllr Whatling for overseeing this.
  
- v. Render on the Council building:

There have been problems with the render but after some negotiation the original contractor is going to make good as it was under a 10-year warranty.
  
- vi. Handyman & Groundsman Contract:

These contracts were put out to tender and awarded to David Howse Associates.
  
- vii. Sound Management:

The Council approved a scheme for introducing sound absorbing canvasses to the walls of the main meeting room following an assessment it was difficult for some to hear comfortably within the room.

A call was made for photos of local views and residents chose their favourites. These are now installed and feedback shows a vast improvement in the sound levels.
  
- viii. Management of transfer of responsibility for Winterbotham Hall bookings:

An historical arrangement with the Winterbotham Hall Trust was altered to bring it into line with the current situation where there was more and more demand on Council staff and less capacity due to growing Council business. The Clerk supported the Trust through the process of arranging their own booking system and that is now up and running to everyone's satisfaction
  
- ix. Training & Support for Councillors and Staff:

The Council supports ongoing training and personal development for staff and for Councillors.

  - In 2019/20 the deputy Clerk gained or CILCA qualification. Congratulations to her.



- Councillors attended variously, the Being a Better Councillor course, The Code of Conduct course, Chairman Skills course.

#### 14. **March 2020 and the arrival of Covid 19**

By the time Lock down started on 23rd March many arrangements had been looked at in advance to prepare for it and changes made.

- Annual Parish Meeting – cancelled
- Local elections - cancelled
- News that our NDP will not go to Referendum till 2021
- Meet the Councillors events – cancelled
- The render work – postponed till June 20
- Litter Picking – Great British Cleanup – cancelled
- Froffy Coffee forced to shut
- Meetings online are being considered
- Council support GL11 Community response team

## **PLANNING AND HIGHWAYS ANNUAL REPORT 2020**

### **CHAIR OF COMMITTEE, CLLR BRIAN WHATLING**

As Chair of the Planning and Highway's Committee it is again my pleasure to write this year's report. In the past I have regularly reported how well the Parish P&H Committee has dealt with the demands and changes throughout this period, mostly without any serious problems. However, for some time now with the Government's demands that Gloucestershire should be prepared for 12,500 new dwellings throughout the area, Cam naturally considered that alongside other Councils it would be expected to take its share. It is now this apparent disproportionate share that is causing this Council so much concern. It's certainly not difficult to understand why Cam is considered to be a very desirable place to live: a quiet Gloucestershire Parish in beautiful surroundings with easy access to the A38, the M5 motorway with additional resources such as, a Hospital, Playing fields, Swimming Pool, Library, Supermarkets, a Wetlands Reserve, the River Cam, many hundreds of acres of open flat fields and, perhaps the most importantly a Railway Station. Unfortunately, this is precisely what developers are looking for, and with landowners only too pleased and willing to sell these acres of land for housing development, the cocktail is made.

This Council has done whatever possible over the years to keep Cam as a pleasant place to live but pressures from this build programme will begin to cause serious concern regarding School, Doctors, Dentists and Roads etc, and is beginning to place an unrealistic strain on the resources at present available. This is only the early stages of the various proposals yet Cam is already beginning to feel the effect, certainly, in places such as Box Road with a junction problem and parking for the railway station already causing very serious access concerns.

Just as an indication of what is proposed for this area, planning approval has already been given for 701 dwellings in the Box Road area with a further application for 42 waiting approval, around the Draycott area between 700 - 1000 dwellings are expected, to the rear of Tescos another 180 dwellings are also likely, and a further application for 25 houses in the Tilsdown area remains a possibility, this will further increase the population of Cam to well beyond that of Dursley. To really cause problems, our neighbour Slimbridge may well expand by as much as 1,500 dwellings – all this puts a massive strain on the resources of this area.

As I stated earlier in this report Cam quite expected to take a fair share of the requirement, but with the facilities mentioned we are apparently the prime target for developers. In general terms once the planning application is submitted to Stroud District Council it is only Cam Parish Council's Planning and Highway Committee and the general public who can comment on any proposals. For that reason prior to approval we publish these details. This provides the opportunity for all concerned to comment and these comments form the backbone of our discussions with the developers. We do have changes made and developers do take note. However, very shortly we will have the Neighbourhood Development Plan to support these discussions, this being a long-awaited legal document which lays out the dos and don'ts that the builder must adhere to when considering building in this area.

Be assured both the councillors of this committee together with our ward and district councillors all live within this area and it is in their own interest to do everything in their power to ensure that Cam remains a pleasant place to live.. Please consider becoming a councillor and help us in this task of ensuring that Cam really can absorb the pressures that are likely, but please remember we need every bit of support from the local residents to make these things happen. Unfortunately, Cam can

expect to see builders around this area for some time to come. Our office staff are available and will also do their best to provide help with Cam problems or how to become a Councillor.

## **RECREATION & LEISURE ANNUAL REPORT, APRIL 2020**

### **CHAIR OF COMMITTEE, CLLR FIONA POULTER**

I took over as chair of Recreation & Leisure from Miranda Clifton in May 2019, which indeed is a hard act to follow.

It has been a very eventful and challenging year for the Recreation & Leisure Committee and our small band have worked tirelessly to keep up to date with the requirements of an evolving village and a population that is growing continually.

The Jubilee Playing Field regeneration commenced with setting up an advisory committee which has come up with a five-year plan of enhancements and updates.

We abandoned the scheme of Sustainable Urban Drainage at Jubilee Playing Field as it was agreed after further investigation and advice it would not achieve the desired results for removing water from the field.

We held two consultations with Cam residents on designs and aspirations for Jubilee Field which were met very favorably. The first year of our five-year plan needs to be accepted by the R&L committee and then go back to Full Council in June to agree an amended plan. Upon agreement our Project Officer can go ahead with getting quotations for fencing for the skate park and new playground fencing together with an altered perimeter footpath around the MUGA and a splayed main entrance to give a better visual view for pedestrians and drivers.

Tenders will be requested from providers of playgrounds for design and cost specifications with the input of the R&L committee and also tenders for all the other items in the year 1 plan.

Joanne Lewis our Project Officer has an enormous task in front of her. I would like to thank her for her dedication and enthusiasm to this project and know she will endeavor to bring Cam Parish a much-enhanced facility.

I think we all feel excited to be going forward with this project and getting a spade in the ground!

Unfortunately, after conversations with Gloucestershire County Council we are no farther forward with changing Everside Lane from a restricted by-way to a by-way open to all traffic (BOAT) and it remains that our visitors can use the lane for access to the car park only but Everside Lane is still an ongoing problem.

Persimmon Builders are putting in an application to build houses on the fields in front of Jubilee Field and our request is that an access road from the main Dursley Road goes directly towards Jubilee Field and they build a dedicated car park for our use with access across Everside Lane to Jubilee Field.

We have done several maintenance jobs on Jubilee Playing Field. The chain link fencing at the bottom of the playing field has been replaced with post and rail fencing and this is due to have sheep wire attached for the benefit of our dog walkers, stopping dogs being able to gain access to the adjoining field to the motorway.

New ball stop fencing has been erected with the help of grants, all waste bins have been replaced and extra bins installed at Jubilee Field, all bins can be used for both dog waste and general waste. The bin by the skate park has a fire protection system fitted. As the new bins are larger and fully enclosed it will hopefully stop paper blowing around the field.

We have also cleared brambles that have encroached over the second entrance area for parking of maintenance equipment.

Allotments are very popular at the moment, we have split three large plots at our Ashmead 1 site into six plots and all were let within a few days. Most of Cam;s allotments are looking well cultivated.

The annual allotment holders meeting was well attended having the added attraction of a guest speaker. Thanks to Lucy Biddle our Deputy Clerk for arranging the evening and all her work during the year.

Rackleaze Nature Reserve has had some work done by Stroud Valleys Projects. Our contract has run out with SVP and R&L are assessing the best way forward. When we are able to inspect the site after the Covid 19 lockdown finishes, a decision will be made on how to manage Rackleaze and talk to owners Tesco regarding renewal of its lease with Cam Parish Council, which is due in 2023.

Cam Parish Council arranged for the War Memorial in Lower Cam to undergo a major overhaul. The wooden carved cross at the top was renovated and the small roof covering replaced. It has been cleaned and a plaque put in place to direct visitors to the church to observe a list of names of those commemorated by the memorial.

The area around the Memorial has been improved and enhanced by the local 'Blooming Cam' group which is made up of volunteers and councillors.

Discussions are also under way to upgrade the stone steps around the War Memorial at Hopton Green.

The kissing gates project to replace old styles with kissing gates on local public right of ways (PROWs) is ongoing with several replacements over the year which means much greater accessibility to walks across the fields of Cam.

I would like to thank the Clerk Jenny Walkley and all the staff who do so much to keep the parish council running.

Also, I would like to thank my Recreation & Leisure Vice –Chair Jon Fulcher who is providing us with his invaluable knowledge on many subjects and all the councillors and staff for their help and dedication to Cam Parish.

## **ANNUAL REPORT: NEIGHBOURHOOD DEVELOPMENT PLAN STEERING GROUP CLLR MIKE GRIMSHAW, JUNE 2020**

One of the major achievements over the last year has been to produce a Referendum Version of our Neighbourhood Development Plan (NDP). The NDP Steering group, chaired by Cllr Terry Grocutt and made up of councillors and residents had worked towards this for five years on behalf of the Council and the Plan was passed by the Examiner in November with minor amendments recommended.

The group worked with consultants Place Studio who provided professional advice and guidance on gaining grant funding particularly in respect of producing a design code document that further strengthens and supports the main plan.

The group carried out a wide scale local Public Consultation throughout July 2019 and the views of stakeholders and residents were taken into account when shaping the content of the Plan.

Looking forward - Referendum is the last stage in the making of the plan when the community can vote for or against it. With the arrival of the Coronavirus Pandemic, all referendums were cancelled. However, although the Cam Plan cannot proceed to referendum until May 2021, now it has been approved by the Environment Committee at Stroud District Council, Government guidance and the Neighbourhood Planning Act is clear that significant weight will be given to a Neighbourhood Plan in decision-making, in so far as the plan is material to the application.

The Parish Council will then be able to confirm that Cam Parish has a Neighbourhood Plan in place that will be used by Stroud District Council when considering planning applications.

Pre-application meetings at Cam Parish Council already explore developers' commitments to guidance and policies set out in the Neighbourhood Development Plan and the Cam Code working through the six main categories: Environment and Sustainability, Local Character and Distinctiveness, Movement and Connectivity, Community Facilities and Services, Employment and in kind contributions to improvements in the Village Centre.

**GLOUCESTERSHIRE COUNTY COUNCIL AND STROUD DISTRICT COUNCIL  
REPORT, MARCH 2020  
COUNTY AND DISTRICT COUNCILLOR, CAM EAST, BRIAN TIPPER**

Please accept this combined Gloucestershire County Council (GCC) and Stroud District Council (SDC) report. I decided to do this as many issues are intertwined. It includes Coronavirus 19 (CV19), Box Road including Cam and Dursley Railway Station, Roman Villa, Neighbourhood Development Plan (NDP), Local Plan (LP), Roads, Community Grant and Greenway.

**CORONAVIRUS 19 (CV19)**

Currently topical. As at March GL11, a well-established Cam based Charity, were forming or had formed plans to take over the charity work that would be mainly covered by the GL11 post code. Further comment will be included in the next report.

**BOX ROAD AND SURROUNDING AREAS**

This segment of my report is significant as it has taken up a lot of time with Cam Parish Council (CPC) office staff, Parish Councillors, District Councillors and County Councillors. I could write a book but within these few paragraphs I will try to capture the main events.

At the start of the fiscal year there were already 450 houses planned on the south side of Box Road within the Local Plan. Another development had already been approved on the north side that was outside the Local Plan. During the year because that permission had been given two further applications were made and passed on the casting vote of the Chairman of the Committee. It was fought very strongly by councillors at all levels who were present in the Chamber. We were assured that no further applications would be allowed.

Regarding Cam and Dursley Station carpark (CD) after various extensions at the end of the summer going into autumn it was thought that the need of outside car parking was hardly needed. Within weeks that was not the case. Work on Cheltenham Spa Station carpark was started. Users descended on CD taking advantage of free parking. As did users from other areas including Stroud and Stonehouse. By doing so it gave them more time. Parking outside the station into Box Road itself became untenable. This was recognised by GCC as one of the major issues within the County. At this stage it is worth mentioning that

the NDP being worked on by CPC was as good as complete by March and, if anything, a final tweak was all that was needed. Part of the NDP expresses the need for more space to provide car parking. It has always been the view of CPC that further land was needed for parking. This has been the view for at least five years and certainly at the time of the application for the 450 houses. Part of the development on the north side of Box Road is the provision of a carpark but it is recognised that might not be ready for another two years. Plus, it is a distance to the station. A suggestion has been made that the field next to the station be designated as an extension to the main car park. Nothing has been confirmed yet. Either way it is recognised that extra parking might become available in time. Watch this space. Of course, the Roman Villa was found by the developer and that too added to the local problems. No thanks to negative comments, it was recognised that GCC, SDC and the developer had the best interests of the site at heart and were seen to find the best solution to satisfy the public demand and the remains themselves.

We all know how much rain we had in the autumn and winter months. The wettest winter on record. This led to many problems and was the cause of the delay in getting the white lining done to govern where parking was permitted. That too added to the frustration of the public. At present, land to be for further car parking has not been identified. What is concerning is the possibility of further planning in the immediate and extended areas that will add to the need for more spaces. The public needs to recognise that CPC has been persistent in challenging GCC and SDC at all levels to find a solution to the issues.

## **ROADS**

With the use of the 150 million budget, a record-breaking amount, the area has benefitted well with complete road surfacing. By working well with officers and the Cabinet member, sometimes doing things at short notice, the area has done well with road surfacing. It should be recognised that pothole repair in the wettest of weather should not be done as excess water and tarmac do not go together. It is recognised that there is still work to be done. Like the painting of the Forth Bridge it never ends.

## **GREENWAY CYCLE ROUTE**

GCC and SDC are working with local designated groups planning and budget wise. There are localised issues as to the route it will take and with that the



planning permissions that may be needed. In particular, the area near the Roman Villa site has become an issue regarding its route and how to deal with getting the rise necessary to get over an existing pipe.

### **COMMUNITY GRANT**

Throughout the fiscal year this grant was available. There was a problem during the year when one application became prolonged and decisions on others had to be delayed until the matter was sorted out. CPC applied and got funding for a path to the play area at Woodfields to enable disabled access. Funds are still available.

## **DISTRICT COUNCILLOR'S ANNUAL REPORT, MAY 2020**

### **DISTRICT COUNCILLOR, CAM EAST, MIRANDA CLIFTON**

For the past five years Stroud District Council has been run by a co-operative alliance of Labour, the Green party & Liberal Democrats. The chair of council for 2019-20 was Labour, and the political leader is Doina Cornell, the Labour councillor for Dursley and a Cam resident. I am one of four councillors representing Cam – two each for Cam East & West.

This has not been a normal year in the district council. First we had the unusual occurrence of a general election in December, and we ended the year with a pandemic. Also, over the past year the council has been in the process of restructuring its staffing, appointing four new senior directors to support our chief executive: three of these were new to the council, the fourth, the new director of resources was already working for SDC. Everyone has risen to the challenges presented and much has been achieved this year with the council still attaining very high satisfaction ratings in the annual survey of residents and businesses.

Over the past year there have been some notable achievements including:

- becoming the first carbon-neutral council in Europe (we also declared a climate emergency, aiming for the council – and whole district - to be carbon neutral by 2030)
- delivering more affordable homes and council houses across the district
- being the highest performing council for recycling in the south west, and being top for recycling in the country
- being the leading council in the southwest on prevention of homelessness
- our Youth Council won Youth Voice Star award for Youth-Led Organisation of the Year
- the Environmental Health team received a Highly Commended award for the way it helps small businesses cut red tape around licensing, environmental protection and food hygiene from the Federation of Small Businesses
- Stroud District Council officers won three awards for the way they deal with stray dogs, animal licensing and contingency planning at the RSPCA annual PawPrints Awards.

As well as attending full council meetings all councillors sit on one or more committees: over the past year I have remained a member of the Development Control Committee, which considers planning applications. Major applications considered this year were the new Forest Green football stadium and conditions around the large development north west of Stonehouse (now known as Great Oldbury) and the development north east of Box Road, both of which already had outline planning permission. Permission was also - reluctantly - granted for further development northwest of Box Road, which does at least bring the benefit of an extra 40 car parking spaces for the station. Had this application been refused by DCC the developers could have gone to appeal, which SDC would have lost. If we acquire a poor record of lost appeals the government has the power to remove planning consent from SDC putting it into the hands of a central authority.

I am also a member of the Planning Review Panel, which considers aspects of the Local Plan. Work on the Plan continues albeit affected by the impact of Covid-19. Officers had to analyse and consider the responses to the Draft Local Plan public consultation that closed at

the end of January, working through the representations and identifying potential changes to address them where appropriate. Other work included strategic sites assessments, traffic modelling around the sites, looking at employment land supply, and an infrastructure delivery plan. There have been continuing discussions with stakeholders on a variety of policy matters relating to the Local Plan, including biodiversity and our CN2030 policy. As yet the plan has not been submitted to the council for approval and no definite decisions have been taken. Officers are working to a tight timescale; it is important that the revised plan is submitted according to the required timescale as the current plan will become out of date, rendering us vulnerable to the demands of developers who are already waiting in the wings.

The other committee of which I'm a member is Audit & Standards which I was drafted onto halfway through the year as a result of a vacancy. The functions of this Committee relate to how the Council carries out its powers and duties in connection with financial governance and stewardship, risk management and audit. It has been a steep and interesting learning curve.

I am not a member of the Housing Committee but notable aspects of its work include taking repairs work back in house, rather than using contractors to do repairs on council houses. This has been a successful transition with tenants pleased at the result. The modernisation programme on our sheltered dwellings continued: eleven new Independent Living units were completed in Nailsworth and works carried out to the common areas of schemes in Nailsworth and Minchinhampton, both of which become 'community hubs' providing facilities for other local residents too. Springfield Court in Cam is now due for similar refurbishment to become a community hub. Glebelands has now closed, with residents having been found new accommodation, and the site will be redeveloped for older person's flats plus a mix of general needs accommodation for affordable rent and shared ownership.

Housing officers don't only deal with council housing: their work with private sector housing includes such areas as encouraging owners to get empty homes back into use; licensing homes in multiple occupation and providing advice to landlords; investigating complaints and approving applications for disabled facilities grants. A great deal of work is also done on supporting those who are or are in danger of becoming homeless.

Over the year I attended: all five full council meetings; all nine DCC meetings including a visit to most of the sites to be considered; both Audit & Standards meetings for which I was a member. I also attended training: in planning (compulsory annually for all committee members); for chairs and vice chairs; on the code of conduct. I also attended several budget workshops.

As a ward councillor I have been approached by local residents with a variety of problems. Those who do not live in my ward, Cam East, I have directed to their own ward councillors, the others I have done my best to help. It isn't possible for councillors to fix every problem, but we can support people in their dealings with the council - point them in the right direction and help them put their case. We cannot give an order to make something happen but I will always do as much as I can to help with any difficulty.

## **DISTRICT COUNCILLOR'S ANNUAL REPORT, JUNE 2020**

### **DISTRICT COUNCILOR, CAM WEST, PAUL DENNEY**

Cllr Clifton's report is very comprehensive, and I have little to add with regard to the work of SDC that she has not covered.

Below are a few items specific to my work on the council.

- **Cycling and walking plan** Work has continued on this and while development of the route in Cam is moving forward slowly (due to being dependent on the development of Box Rd being finished) in Nailsworth we have almost finished upgrading the cycle path that links it to Stroud. SDC put in £60k for the project, GCC matched that and Glous Wildlife Trust gained another £120K in EU funding. Further funding may come forward for the CAM section from the Government as part of their Covid response plan.
- **GL11 Covid 19 response Hub**. As A trustee of GL11 I was able to assist in the transformation of GL11 into our Covid 19 response hub. They have and continue to do a sterling job of looking after so many of our community that are elderly, Isolating or who have fallen on hard times. I am immensely proud of all the staff and especially Indigo Redfern who has been pivotal in the whole process.
- **Cam Parish Neighbourhood Development Plan** A huge amount of work has been put into developing the NPD since the project was instigated in 2014 and I am glad to say that at the last Environment committee stage it was unanimously approved and now passes on to be approved in a public referendum. Unfortunately, this can't happen until May 2021 but in a concession from the government it will now hold weight in the planning process. How much we will only know when it is tested as I am sure it will be. Well done to all involved.

As well as attending full Council meetings I am also a member of the Environment committee and as a ward councillor I continue to help residents with a variety of Issues.

2020 was to be my last year as a councillor the combined workload of being a councillor, Trustee of GL11 and the head of research for an international company increasingly means that I am no longer able to do all three as well as is required, I feel. Due to Corona Virus however and the election being cancelled I will now stay on until May 2021. I will remain a trustee of GL11 until the end of my term.

## **DISTRICT COUNCILLOR'S REPORT, JUNE 2020**

### **DISTRICT COUNCILLOR, CAM WEST, JESSICA TOMBLIN**

I am on the Development Control Committee and the Environment Committee of Stroud District Council.

Over the past year I have been focussed on the Local Plan Review and have attended varied site visits responding to issues raised by residents. Council meetings continue in the current climate via Zoom and I continue to respond to any residents' issues via telephone and email.

I was pleased to work closely with Bovis Homes and planning officers resulting in the Cam Roman Villa being preserved for future generations.

I have been fortunate to have been able to help resolve various issues for residents regarding planning, refuse and other concerns and I continue to support any enquiries that are raised.

The Local plan will likely be delayed as a result of Covid-19. I have been actively engaged working with members to reduce the numbers at the Wisloe site in the emerging local plan which will coalesce Cam with Wisloe, Slimbridge, Cambridge and Gossington if it goes ahead in its full potential form. There is a new potential strategic site at Whitminster to be considered and consulted on.

Councillor representatives from across the various parties participate in the Planning Review Panel which will continue to meet via Zoom to assess progress. It is still too early to say precisely what the outcome of this plan will be for Cam, but many members are concerned at the current impact of housing numbers in the existing Local Plan combined with permitted sites on Box Road. Further work will continue between members, political groups and officers in an attempt to form a coherent strategy that can deliver a long term plan that works for existing and future residents of the Stroud District and meets the wider increase in housing numbers required for our towns and villages.

It is important to continue to stay engaged during the process of the Local Plan Review to ensure that future development recognises the contribution already made by Cam. Cam has suffered houses allocated and granted outside the local plan and it is important to ensure that Cam is not overwhelmed with excessive development. It is particularly important, in my opinion, to be engaged in the strategic roads review and implications of any such review on development. I will continue to ensure that full consideration is given to the impact on the existing Cam community by the potential introduction of such a high number of additional houses on what, at the moment, is still a village community.

## **REPORTS ON CAM INSTITUTE CHARITY, DURSLEY UNITED CHARITIES AND WOODFIELD YOUTH & COMMUNITY CENTRE, MAY 2020**

### **Cam Institute Charity**

This is a small Cam based charity which gives out relatively small grants to local organisations once a year. Any Cam organisation which is open to the general public may apply for funding.

Grants this year were made to the following organisations:

The Door Youth Project; Friday Lunch Club for the Elderly; Cam Jammers Ukulele; Sunset Drop in Café; Cam Cricket Club; Cotswold Vale Talking Newspaper; Kingshill House; World Jungle; The Quarry Chapel Project; Cam & Dursley Creatives; Winterbotham Memorial Hall.

Miranda Clifton, May 2020

### **Dursley United Charities**

This is a small locally based charity formed some years ago from an amalgamation of two or three smaller historical charitable organisations in Dursley and surrounding parishes.

It provides three types of grants: to help young people with their education e.g. for college or university expenses, not very many people applied last year; Christmas benefactions, which are granted on recommendation from health visitors, social services etc. for people in particular need (44 last year) and individual one-off grants which are given to people in cases of emergency - usually referred by a health visitor or other care professional: there were 5 last year - we are receiving an increasing number of request for help for people in desperate need.

The following organisations also received grants:

Dursley Friday Lunch Club; GL11 Community Project; Treetops Summer Holiday Club; Dursley Friday Lunch Club; Dursley & District Old Peoples Welfare Committee; GL11 Community Project; Cotswold Vale Talking Newspaper; Rednock School Young Carers; Treetops Summer Holiday Club; GL11 Holiday Hunger Project.

Miranda Clifton, May 2020

### **Woodfield Youth & Community Centre**

The community centre is run by a group of trustees, some of whom have been managing it since the 1970s; we meet every couple of months to oversee the management.

The centre is used by the youth club, which meets on two evenings a week, regular activities such as a bingo session and dog training classes, and is hired out to casual users for events such as parties and celebrations. Some of the trustees also run and cook for a fortnightly lunch club for local older residents. With some new enthusiastic and energetic committee

members a lot of work has been done on the premises and grounds in the past year and new ideas for using it put into practice.

Managing the centre is becoming increasingly challenging as it gets older and needs increasing maintenance. However, the small group of local residents keep it running very smoothly and are doing their best to make sure it stays that way.

Miranda Clifton, May 2020

# CAM, DURSLEY AND ULEY JOINT WOODLANDS MANAGEMENT COMMITTEE

## **CAM ANNUAL REPORT 2019**

### Cam Peak & Long Down

The footpath warden has carried out several inspections.

The footpaths received their annual cut earlier in the season this year.

Several blockages due to falling trees/branches were also cleared during the year.

The hedge was cut back from the bridle-path gate CCA83 (off the main road) to make it easier for riders to use.

Our fencing contractor Pete Simpson did a great job replacing the rotten gate post to Finger Lane and carried out other necessary repairs.

Some of our neighbour's (Mr Griffith) cattle got onto the Long Down - the weak point in the fence was repaired.

The drainage channels in the car park were cleared.

The site was grazed by 13 of Mr Owens cattle.

The Mid-Cotswold Tracks & Trail Group (horse riding) used the site for one of their 'treks' on 3<sup>rd</sup> Aug.

Rotational bracken cutting was carried out later than usual and the machine suffered several breakdowns, but we did manage to complete the target areas.

The roadside hedge was trimmed.

A substantial area of the Long Down was cleared of recently colonised scrub, as part of our agreement with Natural England to restore limestone grassland.

Following a report from SDC dog warden, Alex Myrie, the dog-waste bin in the car park has been replaced.

### Countryside Stewardship Higher Tier Agreement (CSHT)

The administration, including recording & reporting of operational activities as part of the monitoring process have been carried out as per the agreement.

### Cam Woods.

The footpath warden has carried out several inspections and highlighted several problems which have been dealt with.

Path 92 has been strimmed during the growing season.



The annual safety inspection has been carried out and our Forestry Contractor has cleared the fallen beech. The condition of other trees continues to be monitored.

A large limb from a mature beech collapsed onto a well-used unofficial footpath and was subsequently cleared.

Another fallen beech blocked the permissive bridle path, but was cleared, together with cutting back of encroaching growth to improve access.

An unofficial camp site appeared in the timber loading bay of Sheep-path during the school holidays, the local constabulary were informed and the resulting rubbish was removed by SDC.

# STINCHCOMBE HILL RECREATION GROUND TRUST, 2019-20

## Contents

1. Committee Members
2. Conservation
3. Website
4. Finances
5. Ash die back
6. Wheelchair friendly paths
7. Membership of Country Land and Business Association
8. Other business
9. How the Covid 19 crisis affected us in March 2020

### 1. Committees members

Christopher Tubbs (CT, Chairman and Foundation Trustee)  
Chris Wiltshire (CW, Deputy Chairman and Foundation Trustee)  
Kath Hudson (KH, Stinchcombe Parish Council)  
Christina Carter (CC, Cam Parish Council)  
Symon Ackroyd (SA, Dursley Town Council)  
David Purnell (DP, North Nibley Parish Council)  
Peter Sumner (PS, Foundation Trustee)  
Marian Shaw (MS, Foundation Trustee)  
John Hammill (JH, Foundation Trustee)  
Nick Priest (NP, Foundation Trustee)  
George Butcher (perhaps now James)  
Rosie Hargan  
John Smallwood  
Leigh Topping (club manager Stinchcombe Hill Golf Course)  
Graham Wingrove (GW, Clerk)

### 2. Conservation

The Deputy Chairman provided his Conservation Report as follows in Oct 19:

- I. Ragwort pulling was done on August 4<sup>th</sup> on all SSSI areas including Village Green, also “Grass Triangle” by club carpark and Seven Sisters bay. Some areas of rough were also done. This was in anticipation of the club’s contractor cutting the rough etc. Unfortunately that did not happen.

- II. The Tracmaster was prepared for cutting the grass on September 20<sup>th</sup> but alas it broke down and had to be towed back, it is currently waiting to go to Dursley Garden Machinery for repair. At present the Village Green has not been cut.
- III. Mark Wroot was due to start work on the Hill with the Robocut machine on September 17<sup>th</sup> but did not turn up. I have not been able to contact him despite leaving messages on his mobile phone and sending e-mails.
- IV. The volunteers started last week and over the first two work parties approximately four cubic metres of invasive cotoneaster have been pulled up or cut and treated where possible. All debris removed from SSSIs before berries ripen and fall.
- V. The Gloucester Vale Conservation Volunteers were due to work on the Hill and cut back scrub on the south side of the Village Green.
- VI. The core volunteer group of 5 had worked on 28 days since the last Meeting and had accumulated a total of 626.3 man-hours in the process. A significant element of this work had included raking the grass on the Stinchcombe Village Green.
- VII. A contractor had been employed to clear the scrub on the on the car park slope, as had been requested by Natural England.
- VIII. Stump treatment: there was a very limited time window from cutting any trees and applying the treatment for it to be effective.
- IX. The logs on the approach to the Golf Club were becoming an eyesore.

The Trustees discussed that mounds and ditches to the sides of the public highway on the hill needs to be maintained to prevent vehicular degrees onto the land. MS kindly agreed to speak to GCC Highways to seek their advice on the best way to counteract this activity.

On behalf of the Trustees the Chairman proposed a vote of thanks to all the volunteers who undertook their valuable conversation work on the Trust's land and, in particular, to Christopher Wiltshire for all efforts in coordinating the volunteers and managing the conservation work on the Hill.

It was agreed that members should spread the word that more volunteers are needed.

### **3. Website**

The planned new website had had to take a lower priority over recent months than intended but some work had been undertaken. Paul Creamer was still most willing to assist with its development. Kath Hudson suggested that others, particularly within neighbouring parishes and with the necessary skill sets could help. Marian Shaw suggested it might be appropriate to combine the development utilising social media for ease of communication, updates and uploading of photographs and other such documents. The Trustees offered their assistance along with members of their PC's to help with the development of the website.

#### **4. Finances**

- I. Accounts are available from Graham Wingrove - Clerk.
  
- II. Rural Payments Agency: There were problems with submitting the Single Farm Payment application to the Rural Payments Agency this year. The application to the Agency for payment of approximately £2.2k for 19/20, representing just under 30% of the Trust's total income for FY 18/19, had been rejected by the Agency as the area of eligible land for the payment was now below the minimum area of 5 hectares following a re-categorization of the Trust's land, with much more detailed granularity, by the Agency.

The decision was appealed but to date no avail. There have been similar cases with other landowners, some running into this problem and having been asked to pay fines and repay previous payments.

The Clerk and Deputy Chair walked the Hill to check the parcels of the grassland area that is not leased to the Golf Club. They also produced screen shots of marked up significant areas of our land that is grassland obtained using OS Grid Reference Finder program.

The overall assessment indicated that the total is 6.985 hectares and therefore should be entitled to the single farm payment.

It is likely that Agency had incorrectly defined some of the Trust's remaining land as being part of the golf course and probably more significantly, a lot of the Trust's land was now designated as woodland as opposed to grassland and therefore not eligible for the Single Farm Payment. A minimum of 5 hectares of entitled land were required for the payment and the RPA had advised that any land that had been entitled for 2 consecutive years would not be entitled for application in future years. The Trusts' land was divided into 2 parcels according to the RPA records, one was in 0.62Ha in area and eligible for the payment as it was classified as grassland and the other, 79.94Ha in area, including the land leased to the Golf Club, but none was entitled for the payment as none of it was now classified as grassland.

Therefore the 2020 application needs to be carefully considered and the RPA would need to be convinced that the boundaries on their records were incorrect and also what area of the land was actually grassland. The application is to be pursued.

As soon as it is agreed by the Trust a new application will be made submitting the result to the RPA in order to challenge the decision.

#### **5. Ash Die Back**

The Trustees have studied a Tree Council report on ash die back and recognized the potential hazardous effects of ash die back that was occurring to some of the trees on the Hill, with the danger that could be presented to the public. It is often difficult to determine which trees actually are suffering from die back in the winter. The matter is seen as an important issue amongst trustees particularly with regard to the number and potential of the health of so many trees on the Hill. A strategic survey of trees has been discussed to determine their condition and any required

maintenance or felling should be prioritised close to the Public Rights of Way or other readily accessible areas of the Hill that could present a hazard to the public. The impact of any such survey and maintenance could have a very serious impact on the Trust's financial resources. Tree maintenance contractors are being approached to gauge the impact on budgets.

## **6. Wheelchair friendly paths**

Christina Carter introduced the subject of improved disabled access to the Hill, following on from considerations of improving such access in Cam Parish. Such further opening of the Hill would help to satisfy the requirement of opening up the Trust's assets to a wider cross section of the general public and thus enable them to experience the AONB the Hill sits in.

Cotswold Warden, Mike Thorpe, gave a presentation on this. He had done some initial investigatory work identifying a potential route across the Hill from the public carpark to the shelter above Yercombe Lodge for a wheelchair friendly path. The Trustees agreed to consider the proposal further but were concerned about the gradient of paths and path materials, plus subsequent maintenance responsibilities and suggested that he should consider the idea further and come back with some more detailed proposals.

## **7. Membership of Country Land and Business Association**

The Trust took membership of the Country Land and Business Association as a means of advice and support, which will be required since the retirement of our solicitor from the Trust. The annual direct debit membership cost was £227.00.

## **8. Other business**

- I. Removal of Waste Bin: The Neighbourhood Warden reported an overflowing container to the north of the houses beyond the Golf Club that the public had been using to dispose of dog excrement; this container was not a designated bin and nearby residents had complained that it was overflowing and was never emptied. The Neighbourhood Warden had now had the bin removed. This potentially could now result in a greater amount of excrement on the Hill and the situation would need to be monitored.
- II. Cotswold Running Club 21-22 Sep 19: The Cotswold Running Club had held an overnight run that had crossed the Hill over the 21-22 September.
- III. 90th Anniversary: It was the 90th Anniversary of the Hill this Summer and the idea was mooted to have guided walks of the Hill in memory of Sir Stanley Tubbs on the 17 May 20. This opportunity was lost due to the Covid 19 crisis
- IV. Clerk: The new Clerk is taking on more responsibility than initially envisaged when he was appointed and is to be remunerated appropriately.

- V. Surveyor company Dalcour Maclaren, who acting on behalf of Wales and West Utilities have been tasked with the mandatory relining the gas mains pipe that runs from the western edge of most southerly part of the Golf Course under the first fairway and then on to just past the main road across the Hill. There is to be a zoom meeting to discuss their plans in more detail.
- VI. Dursley Dozen Race – 9<sup>th</sup> February 2020: The organiser of this race had previously sought permission for the race for approximately 600 runners. However, in light of the potential danger of the damage to trees from the predicted Storm Denis, there had been dialogue with the organisers who decided to cancel the race and hopefully reschedule to the early Autumn in the interests of public safety.
- VII. Sprinkling of Ashes on the Hill: A request from the brother of a deceased local man, whose family had enquired whether the deceased ashes could be sprinkled on the Hill. The Clerk had agreed to the request with appropriate sympathy but with certain appropriate conditions.

## **9. How Covid 19 affected us in March 2020**

- I. In light of the Coronavirus outbreak the March 20 meeting was deferred until later in the year. However a more informal meeting took place before a guided walk through some parts of the Hill by the Deputy Chair for the Chair and the Clerk. No major decisions could be taken at the informal meeting.
- II. The Golf Club requested a rent holiday which would have caused the Trust much hardship however the Club was able to pay rent in full for April. The Club will inevitably experience cash flow issues and there may have to be discussion around future payments but the news has been positive with regard to take up of Golf again.
- III. The interest rate on our interest bearing 32 Day Notice Account has now reduced from 0.75% to 0.1% following the reductions in BoE Base Rate.
- IV. The planned Robocut cutting by Mark Wroot had not happened due to problems within the Contractors's organisation; however it had been rescheduled for the coming September. New cutting heads might be used, which although were more expensive to hire, they would allow more work to be completed at double the speed.
- V. At the time of the meeting contractors utilising 2 men for a week, funded through the 'Back from the Brink Project,' at a cost of £1,600, were cutting the area to the West of the public carpark. This work was to promote the habitat of the Rock-rose Pot Beetle, a very rare species and the Hill was one of only four sites within the UK where this endangered species had been located. There was a possibility that this Project Team might want to host a social gathering on the Hill on the 15<sup>th</sup> or 16<sup>th</sup> August to promote the nature of their cause; the Chairman fully supported the idea of this but voiced a point of caution with respect to the implications of the Coronavirus epidemic.

## **NEIGHBOURHOOD WARDEN**

In the last year I have dealt with numerous different issues which include fly tipping, fly posting, abandoned vehicles, litter issues and visiting vulnerable people.

Last year the Neighbourhood Wardens replaced Care line equipment in all Sheltered Accommodation across the District which included The Corriet, Springfields Court and Draycott. As well as installing new equipment and dealing with faults to other residents, I have also liaised with Cam Parish Council and the Police on a regular basis and dealt with issues brought to my attention such as patrolling the Jubilee Playing Field for dog fouling and anti-social behaviour.

I also help organise a Community Litter Pick each year but unfortunately this had to be cancelled due to the Coronavirus outbreak.

Simon Moulding  
Neighbourhood Warden  
07896690139  
simon.moulding@stroud.gov.uk



## REPORT BY BLOOMING CAM

BLOOMING CAM was set up in October 2018 with the aim of making the centre of Cam look tidy and more colourful with fresh planting, weeding, cutting back and clearing.

The very first brief was to improve the garden area around the Lower Cam war memorial at the bottom of Cam Pitch. Twenty-one sacks of green waste, as well as plenty of litter, was cleared at that first meet up, clearing the way for two sacks of daffodil bulbs to be planted in the flower beds.

The small team of five volunteers have been regularly meeting each Wednesday afternoon since then, although only two members have been turning out since the end of March to weed and water at a safe distance in line with Covid 19 restrictions.

We now garden at the Lower Cam war memorial and the flower beds opposite and look after the large bed running around and in front of Froffy Coffee café and Cam Parish Council on Noel Lee Way. We hope to extend the area we look after as more gardening volunteers join our friendly gang.

The Cam community has been wonderful in its support of our voluntary group, both with kind words during our gardening sessions and generous donations. Dursley Tangent Club and The Dursley and Cam Society have both given us fantastic garden centre vouchers, Dursley Pet Shop donated bags of bulbs, an anonymous cash donation and card touched our hearts and Cam Parish Council continues to support us both with funding and the use of its premises.

An appeal for unwanted gardening tools at the end of 2019 resulted in wonderful gems from garden trowels to wheelbarrows being donated. This has made a huge difference and means we don't have to trundle up the road with our own gardening equipment each week.

All five volunteers are looking forward to the current restrictions being lifted so that we can get back to keeping Cam colourful! We always need more volunteers and if anyone would like to join us, please contact volunteer Jo Lewis at Cam Parish Council or by ringing 01453 548884.





## REPORT FROM CAM SPORTS CLUB

Cam Sports Club received funding from Cam Parish Council in order to carry out some much-needed renovation on what we call 'The Shed'. The building was very outdated and needed significant work to bring it into the 21st Century to provide better changing and social facilities for Cam Bulldogs FC, Cam & Dursley Tennis Club, Cam Cricket Club and for the skittle teams who play their matches at The Shed.

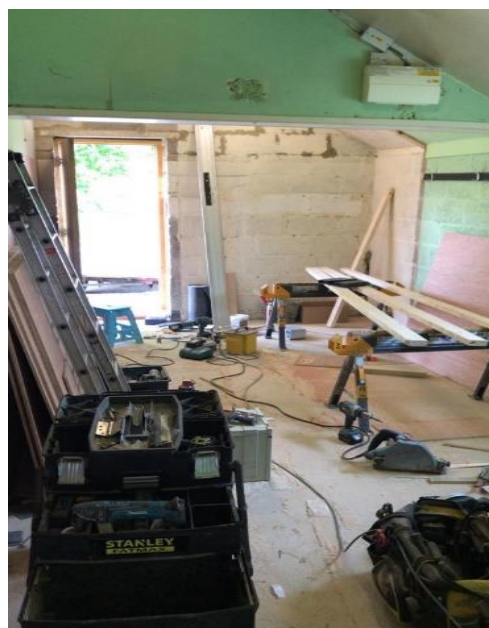
The money received from the Parish Council contributed towards us being able to improve changing facilities, which included installing separate shower areas for players making the changing facility larger and relaying the floor making it stable and secure. We were also able to provide a separate referees' changing room.

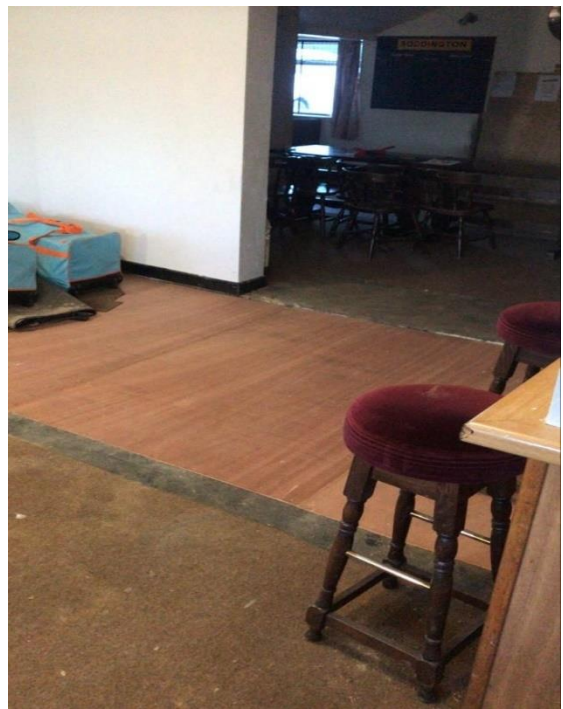
We renovated the internal fabric of the Sports Club including, new curtains, seating areas, replacing doors and repainting the inside of Cam Sports Club throughout!

The funding was put to great use and it has significantly improved The Shed. The Sports Club is hugely grateful for the Parish Council's support and funding and we are hoping to be able to move forward with even more success on and off the field and there are big plans in the pipeline!

We hope everyone is staying safe and we look forward to welcoming people back down to The Shed to enjoy playing sport again soon.

Here are some photographs of some of the work that took place.





## **GL11 report for Lincat automatic mains fed water boiler and heat resistant mounting**

### **Description of the project**

Our Hub Café@GL11 is the heart of GL11, providing a healthy and affordable service to our community 5 days a week. It is the enabler that encourages and welcomes our most vulnerable service users, offering them a safe place where they can be themselves, begin their GL11 journey, a place where they can meet and make friends, whilst building their confidence and connections that ultimately develops resilience.

Aside from providing an affordable meal and a warm welcome, our Hub Café acts as the catalyst for new faces. We find many new service users first come to the Café for a drink or meal, they get chatting to other service users and staff and are then encouraged to take part in the varied menu of activities we deliver. For many disabled and older people our Café provides the only hot and nutritious meal of the week and an opportunity to meet and make friends, building the connections that develop resilience.

We are open to the general public 4 days a week, providing a healthy, affordable and welcoming service to our community. On a Friday we provide a healthy lunch for our Family Friday participants. Across the year we serve over 2070 lunches to vulnerable people and a further 400 Family Friday participants benefit from a hot and nutritious lunch.

The funding provided by Cam Parish Council has enabled us to replace our old and unreliable hot water urn with a new Lincat automatic mains fed water boiler with a heat resistant mount.

### **Outcomes**

Our Hub Cafe@GL11 is more than just a popular café for local people, we have several volunteers supporting the Café and our kitchen with the preparation and serving of food. It is a place for our volunteers to learn new skills and the place where many people simply meet over a hot drink and get a feel for GL11's inclusive ethos.

On a Tuesday and Wednesday, we run two weekly groups for adults with learning disabilities: "The Adventurers" which has a different fun activity each week to develop confidence, skills and address loneliness and the "Gateway Award" which is a Duke of Edinburgh Award type course enabling participants to try new and exciting activities, build work experience by volunteering and develop self-esteem by achieving a recognised award. For many of our adults with learning disability the Café provides the only hot and nutritious meal of the week



and an opportunity to eat something hearty and drink something hot whilst engaging in conversation and laughter with their peers and other users in a friendly and non-threatening environment.

On a Thursday we run our Feet, Food and Friendship group, targeting the most vulnerable and elderly members of our community. This group combines subsidised chiropody sessions which enables older people to retain their mobility and independence with a variety of activities based on participants needs and feedback. Activities range from basic mobile phone & tablet support, general knowledge quizzes, board games, bingo to external speakers i.e. Coventry Building Society presentation on power of attorney and bank security. Lunch with hot drinks is offered and for many participants, our Community lunch is the only opportunity they may have to eat something whilst in the company of friends, thus further addressing their isolation and decline.

*“Lovely food, great activities and staff. Not many places where you can get all that in one session” Thelma*

On a Friday we provide a healthy lunch to our Family Friday families consisting of adults with children aged under 5. Not only is a healthy lunch on the table, but children and parents have quality time together and are encouraged to adopt a healthier, happier lifestyle and eat together as a family!



Over the summer shutdown the Hub Café and reception area were decorated making the areas look fresh, clean and inviting. The Café area has been refurbished with new lights, tables, chairs, blinds, sideboard, coffee and water machine and new crockery. Feedback to date has been very positive!

Since the Café's refurbishment we have seen new faces coming in, helping themselves to a hot drink and enjoying the warm and welcoming atmosphere. The new Lincat water boiler and heat resistant mounting is much safer than our old urn and is easy and safe to use.

We are pleased to share with Cam Parish Council links to our case studies page on our website <http://www.gl11.org.uk/about-us/case-studies/>. These stories truly demonstrate the impact that GL11 has on our local community members.



## Dursley Welcomes Walkers

### ANNUAL REPORT TO CAM PARISH COUNCIL 2020

Dursley Welcomes Walkers has had another successful year in 2019. This community group works actively to meet the aims of the Walkers are Welcome organisation and to promote Cam, Dursley and the surrounding area as an interesting and enjoyable place to visit and enjoy the excellent walking that this area offers.

Our January report and application for reaccreditation as a Walkers are Welcome town once again received some excellent feedback in recognition of our work and confirmation of our continued status as a Walkers are Welcome Town.

#### **Dursley Walking Festival 2019**

Our 8th walking festival was held in October 2019. We are pleased to report that our numbers of walks and walkers at the festival again increased on previous festivals and we were again pleased to welcome visitors to the Dursley and Cam areas to enjoy our wonderful countryside. The 2019 programme featured 41 walks included some of our popular walks from previous festivals including the Cam and the Winterbothams walk (which includes a visit to Cam Mills), and the Historic Graveyards of Cam walk, also a taster of our new 16 mile circular walk which passes through Cam. We included 2 walks from Cam and Dursley station in conjunction with Wessex Wanderer Railway Walks, this is a good inclusion as it promotes the festival through railway stations along the Wessex Railway Line.

An interesting and popular inclusion in the 2019 festival was our “Exploring the Past and Spinning and Weaving Workshop” in Cam. This was aimed at children and was very well received.

We could not, of course, forget the non-walkers and we again held our quiz at the Dursley Community Centre, an interesting and informative talk on “Old Paths of Gloucestershire”. We again closed with our festival our home-made tea and cakes at the Dursley Methodist Church.

The 2019 festival also included our Family Treasure Hunt, which was well supported, the winning family (from Cam) won tickets kindly donated by Cattle Country.

BBC Radio Gloucestershire again supported the festival with many mentions and a couple of interviews being broadcast in the run up to and during the festival. Thanks to BBC Radio Gloucestershire for their continued support.

The festival continues to attract visitors from other parts of the country, some are new and other return from previous years.

#### **Cotswold Gateway project**

Dursley Welcomes Walkers are pleased to confirm that our plans for our 16-mile circular walk are still progressing. We are still working with The Cotswold Conservation Board on this walk.

#### **The Lantern Way**

Our 14-mile waymarked route which starts in Dursley and then passes through parts of Cam, Coaley and Uley continues to be a popular walk throughout the year. It again featured in the 2019 festival as a self-led walk but for 2020 it will be included as a led walk.

#### **Dursley Walking Festival 2020**

Plans are well advanced for our 2020 festival lasting 5 days. As with previous festival several walks are planned to either start in or pass through Cam

#### **New Walks leaflets**

We were pleased to be able to get printed the Cam’s Historic Graveyards walk which has been circulated to all the churches featured and other outlets. Thanks to Cam Parish Council for support in this.

We would be interested in hearing from anyone who is interested in working with Dursley Welcomes Walkers, we can be contacted at the email address or telephone number below.

On behalf of Dursley Welcomes Walkers I would like to thank Cam Parish Council for their continued support including the ongoing sales of walk books on our behalf. Thanks also to Dursley Community Centre, traders in Dursley and Dursley Town Council who have also supported us in our activities

## Chris Cherry

Chairman, Dursley Welcomes Walkers.

13th March 2020

Dursley Welcomes Walkers, Jacob's House, Castle Street, Dursley, Gloucestershire GL11 4BS

Email: [dursleywaw@gmail.com](mailto:dursleywaw@gmail.com) Telephone 07743 307686  
[www.dursleywelcomeswalkers.org.uk](http://www.dursleywelcomeswalkers.org.uk)

## Report on Cam & Dursley youth service

Cam Parish and Dursley Town Councils jointly commission The Door to provide youth services for our residents. These consist of the youth clubs in The Vibe and Woodfield Youth Centres, activities in the school holidays, outreach work in our communities and support for pupils at Rednock in association with Rednock's staff.

This is monitored by a group of Cam and Dursley representatives from the councils and the buildings' management committees. A report is submitted quarterly (circulated to all councillors) and presented by a director of The Door and Kathleen, senior Cam & Dursley youth worker, to a quarterly meeting; any issues raised are addressed at the meeting.

Youth club sessions take place twice a week at Woodfield community centre, and at the Vibe in Dursley. Sessions are informal, organised around different themes, for example there was a mental health month, and a month on money - management, budgeting and understanding different financial products, also more lighthearted festive themes around Christmas.

As well as the club sessions The Door staff work closely with the local schools, with young people in Y6 on a transition programme to secondary school, as well as to introduce them to the youth clubs. Work is also on-going with Rednock: Kathleen goes into the school to help support vulnerable young people, and helped run some successful revision sessions prior to the exams last summer. During the school holidays there are extra activities and trips out which were shared with young people from Wotton – a useful opportunity for community integration. Our youth workers continue to work closely with the Neighbourhood Policing Team to help engage those young people who are not engaging with centre-based activities. Some of the young people visited to the Police HQ at Waterwells – a real eye-opener for them to see the manpower that goes in to keeping them safe.

Young people attending at Woodfield youth centre tend to be younger – Y6 –Y8, after which many move on to attend at The Vibe where numbers reached capacity at some points in the year. The relationship of the youth club with the Woodfield Community Centre management committee remains good, largely due to the youth worker's commitment to the young people and the centre; she regularly attends the centre management meetings, ensuring that any problems can be rapidly sorted out.

Unfortunately the pandemic has meant that the youth clubs have had to remain closed, but The Door has taken its youth work services online, delivering regular broadcasts to their young people, with young people also able to book in 15 minute chats with their youth workers through the website. There is currently no news as to when youth club sessions will begin again.

Miranda Clifton, May 2020

## **STROUD DISTRICT YOUTH COUNCIL**

### **Uncertainty, Anxiety and Camaraderie**

Uncertainty is a huge cause of anxiety for many young people. The pressures of exams and future career paths, alongside maintaining a social life, all come with elements of doubt and apprehension which manifest themselves in the mind-sets of many young people. Whilst many of these societal pressures have supposedly been swept aside during our current state of lockdown, young people seem to be experiencing a heightened level of anxiety and other mental health issues throughout this apparent limbo.

As a year 13 student myself, with exams having been cancelled, I find myself increasingly at a loose end. Although there is no longer the pressure of A levels and achieving the grades needed to go to University. Recent events mean there is still a huge amount of uncertainty. What will happen in the coming months? Will our plans for the summer and onwards be put on hold or cancelled altogether? I think this apprehension, has become far worse than exam stress because at least with that, there was an obvious end goal and some knowledge of what the worst-case scenario might be. This is only exemplified in that nobody has an answer to the questions that many of us have right now. Whilst, of course, we can't realistically expect the situation to be resolved in the coming weeks, I think it is important to acknowledge how many young people are feeling and the impact of these events on our mental health.

The above seems a bleak image of the current mentality of young people. Paradoxically one of the most interesting things about this 'new normal' is that although separated from friends and family, there is a far greater sense of community. I feel hugely lucky to have grown up during a time where we have social media... and apparently about a million different new video calling platforms!!

Through the support of SDC's youth work team, we continue to seek the views and opinions of young people to subsequently listen and advocate how young people are thinking and feeling. Whilst there is a greater amount of anxiety for many people during these unprecedented times, never has there been a greater feeling of camaraderie, or an ability to support each other through this difficult period which will undoubtedly come to an end...eventually.

Helen March, Chair of Stroud District Youth Council





The Door has enjoyed another successful year. We continue to be proud of our association with the great communities of Dursley and Cam and to have had the opportunity to initiate and be involved in numerous activities to support the youth and the general community.

Our formal weekly open access youthwork sessions both at The Vibe in Dursley and Cam Youth & Community Centre have seen many new young people in the past 12 months. Our sessions are open to all young people aged 11-17 at The Vibe and Cam Youth & Community Centre.

During term time The Door continued to host weekly youthwork sessions - 4 afternoon/evening sessions per week at The Vibe and 2 afternoon sessions at Cam. Again, as a result of additional funds raised and the support from the Police and Crime Commissioner, we were also able to provide additional activities during school holidays.

Our summer programme was busy, with sessions and activity making the most of the 6-week summer holidays and ensuring that all young people had somewhere safe and productive to go. All our trips were very well attended and a few were oversubscribed - not only did the young people represent their youth centres well integrating with young people from all centres across the district.

In other aspects of our service, The Door was able to continue to provide intensive help to the most vulnerable young people and parents via our well-established mentoring and family support service.

Meanwhile our commitment to supporting the wider community continued with Dursley Fireworks and Festive Dursley. We are also continuing to work closely with Rednock School, the local neighbourhood policing team and SDC youthworkers.

At the time of writing we are embracing the challenges and opportunities that the COVID19 crisis has brought. Our youthwork team have been working hard to adapt their delivery and continue to reach young people via social media and phone conversations. In addition, Kathleen Hanbury our community youthworker for Dursley & Cam has been a regular face at Rednock school supporting those students of key workers (observing social distancing of course). In addition, she has been undertaking detached youthwork alongside the PCSOs to ensure young people are safe and return home if they are out without good reason. All other support services continue to operate with our intensive support for young people and parents seeing a dramatic increase. More about our services and support is on our website [www.thedoor.org.uk](http://www.thedoor.org.uk)

The team have certainly shown their dedication and commitment at this time as they continue to find new and creative ways to keep support for young people alive in Dursley & Cam.

## Cam And Dursley Creatives

### Grant update – Cam Parish Council

Cam Parish Council has enabled Abi Nichol, a local artist and creative catalyst to work in the local community to connect and develop creative activity in Cam and Dursley. Alongside the projects highlighted below, she has supported the planning and design of a postcard project with Kingshill House, which will be delivered to every local household, and the development of a Rainbow photography project for young people with The Door.

Cam & Dursley Creatives is a new network for people in the town and surrounding areas interested in making the area a more creative place to live, work and play. This group is made up of local residents, artists, community organisations, library, schools, youth club, and welcomes anyone that has an idea, or want to make things happen in their local area. The group has been meeting regularly with support from Cam Parish Council and Create Gloucestershire, and since lock-down has continued to connect on-line. For more info on when the group will next be meeting: <https://www.creategloucestershire.co.uk/cam-dursley-creatives>

Other projects that have benefitted from the Cam Parish grant include:

### **1. Mosaic Sculpture for Sculpture trail**

Cam Mums is a small voluntarily run group, who provide craft sessions for a minimal cost to local families, during school holidays at Dursley library, and more recently at Kingshill House.

With support from Cam + Dursley Creatives, they were encouraged to make a mosaic sculpture to be placed in The Sculpture Woods. After some initial research into what materials to use to make the sculpture a permanent feature, funding was sought and new skills learnt.

Inspired by the idea of an open book, each mosaic design celebrates and promotes libraries and the importance of children reading. It also shows an appreciation of and reflects the wonderful wildlife and countryside in the local area. Their aim is that the children involved will be proud of the finished sculpture and will want to return to the woods to see it again and encourage others to visit the woods.

The journey from the initial idea to delivery has been a long and at times, but a worthwhile one. It took over eighteen months from conception to having enough funding to embark on the project. The reward is all the greater for the difficulties and frustrations along the way, as they say! From never having undertaken a project of this size and complexity before, the Cam Mums have learnt tenacity and gained other new experiences and knowledge.

What has been so useful is the networking and sharing of ideas and information within Cam and Dursley Creatives, from whom to approach for funding, and recommended artists to work with.

The seed funding from Cam Parish Council helped unlock additional funding; contributing towards learning how to make mosaics, pass these skills onto local children, and purchase specialist materials to install the mosaic as a lasting legacy.

With the expertise of TomatoJack Arts, two skilled mosaic artists who have a studio in Berkeley, they delivered a two-hour adult workshop to teach the parents and Cam Mums group leaders the techniques, skills and safety aspects required. The children then took part in a mosaic making workshop in the studio during February half term, led by the Cam Mums with the two mosaic artists on hand for any queries and help. 13 children attended, aged from five to thirteen years and just over two thirds of them live in Cam. There was no charge to the families. They wanted to make a sculpture that would look professional and have longevity. Employing TomatoJack Arts enabled both, and as skilled artists have lots of experience creating outdoor mosaic pieces and working with community groups.

TomatoJack Arts provided all the materials required to make the mosaic and grouted the piece. The original plan was to install the mosaic during the Easter holidays and invite all the families to join for an official unveiling! Covid-19 and the lockdown meant this has been postponed until it is possible and safe to do so.

The two Cam mums feel a big sense of achievement in this project and are extremely proud of the mosaic. "We feel we have provided a unique experience to the families and one that will have lasting memories for them, as well as something visitors to the woods can enjoy, hopefully for many years to come. We are very grateful to all our funders who believed in our project and helped us make it a reality".



**Feedback from participants involved in making the mosaic:**

*“My favourite part was working on and seeing the Golden hare come to life.” E, age 11*

*“My best part was helping with the fox and being asked which colours we would like the flower to be and working on it with my friend.” O, age9*

*“I liked working on the book pages and cutting the tiles. It was a very special moment seeing the finished piece, I felt proud of us all and what we had achieved.” J, age 13*

*“I really enjoyed cutting the tiles and doing the flower with my friend. It was great how we all worked together as a team. The older and younger children worked well together. All participating and taking their part. I feel proud and honoured to have made the mosaic and am excited the sculpture will be on show in the woods. We can then visit and see it when we want.” M, age9*

*“I enjoyed sticking tiles on the fox with mummy.” C, age7*

*“I enjoyed working with everyone and was pleased with the end result.” L, age 11*

**Numerous texts were also received from parents after the adult workshop and the mosaic making day:**

*“We both wanted to say how much we enjoyed last night. It’s an amazing project and we feel privileged to be a part of it. Just been telling the girls all about it and they can’t wait to get started.”*

*“Wow! We have all had a fantastic day and I think we should all feel very proud. Mosaic looks amazing. Both you and Stacey have worked so hard and thank you so much for having us all to be a part of it.”*

## **2. Connect and Create Event**

The first Creative Network meeting in partnership with World Jungle took place in July 2019 to:

- network with others doing creative projects and explore opportunities for closer collaboration in Cam and Dursley

- make people aware of the newly established Cam + Dursley Creative network set up by Create Gloucestershire and encourage people to get involved.
- introduce a new project happening called “Connect & Create”, using the library as a welcoming, inclusive space where people could meet, connect and get creative, and to encourage creative people to share their skills at weekly sessions.



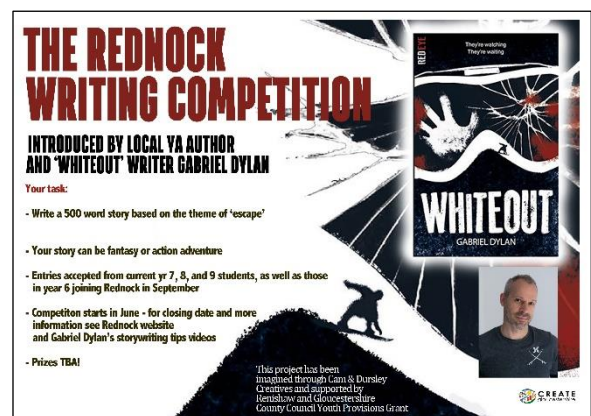
Equipped with ideas generated in the meeting and seed funding from Cam Parish Council, World Jungle was able to lever additional funding. Over 20 weekly creative workshops have taken place at Dursley Library, open to all ages in everything from African drumming, creating with clay, drawing, painting etc.

### 3. Cam + Dursley Creatives on-line writing project

From the Cam + Dursley Creatives event at Dursley Library, a 13-year-old pupil from Rednock School suggested a writing competition for years 7-11. She says, “A writing competition would be a fun activity for children of all abilities to do”.

This idea was discussed with the English Dept at Rednock School and the Learning Resource Centre, who were very enthusiastic about the suggestion from one of their students, and willing to support the project. After an initial call out, and Covid-19 restrictions, the project has now been re-imagined into an on-line creative writing project. With support of the Cam + Dursley Creatives, funding was sought to make the project a reality and an artist call out advertised.

A dynamic local YA writer/author Gabriel Dylan was selected and with the support of the school, has created four inspirational and creative on-line writing workshops on the theme of fantasy and adventure open to years 6 – 10. The films are being used within English lessons to encourage and enhance the students’ story telling skills, with the aim of writing a 500-word story on the theme of ‘escape’. The project was launched on 2 June and the competition finalists will be announced in early July.



**Louise Bardgett**  
**Create Gloucestershire**  
**2 June 2020**

