

# Cammunity

## About Cam :Neighbourhood Development Plan One Plan. One Cam. One Voice.

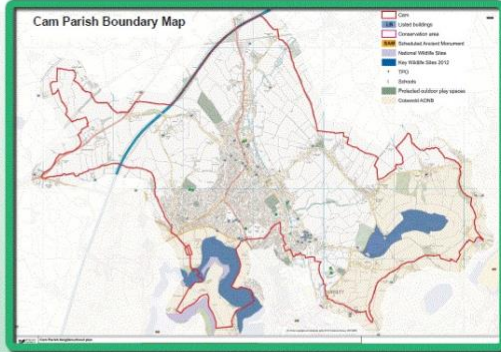


The first recorded evidence of Cam was in the doomsday book, 1086 - 90. Cam is closely associated to the woollen industry with several mills still in existence although only one continues to produce woollen cloth.

Cam is a large village situated on the Cotswold way in the vale of Gloucester, North of Bristol and sharing a boundary with the neighbouring town of Dursley. Cam has 8160 residents but has seen a large increase in residential development since the middle of the twentieth century. 88% of these residents are reported to be "satisfied with the local area as a place to live" but the Cam & Dursley Community Plan produced in 2011 revealed that many things could be improved such as safe cycling routes, good access to public transport and youth services.

The parish boundary is quite extensive and it often surprises people how far the parish stretches. The Cam Neighbourhood Development Plan seeks to secure the best for future developments in Cam by guiding the developers into what you consider important. In order to achieve this, we really need your input and would be very grateful if you are able to complete our questionnaire.

Stroud District Council is currently producing a local plan which recognises the need to encourage a more sustainable employment area supported by further housing. 450 homes on an area at the North East of Cam (Draycott/Box Road) could significantly encourage employment by providing a financial contribution to gain an entrance into a previously undeveloped but designated employment allocation. These proposals could also gain improvements to the Box Road junction but the development will need to be right!



Cam Parish Council Telephone: 01453 548884 Email [admin@camparishcouncil.gov.uk](mailto:admin@camparishcouncil.gov.uk) Web: [www.camparishcouncil.gov.uk](http://www.camparishcouncil.gov.uk)

# Cammunity

## Facilities and Services :Neighbourhood Development Plan One Plan. One Cam. One Voice.

Cam shares many facilities with the adjoining town of Dursley such as the hospital, secondary school, library, swimming pool, community centre, ambulance service and police station.

### Facilities and Services in Cam Today.

Cam has good primary and infant schooling facilities with expansion potential when the need arises. A new secondary school was built in recent years providing good secondary education in adjoining Dursley.



The shops provide adequate food shopping but the retail facilities are limited. Cams doctors and dentists surgeries are widely used by residents and evidence has shown that an increase in capacity is available if required.



Despite the upgrades to broadband services locally, slow broadband speed is still identified as an issue. We have 6 active churches in Cam but burial grounds have reduced significantly and a new burial ground will need to be allocated within 15 years.

Cam has 6 halls or buildings available for all members of the community to hire out. GL11 is also available to hire but is more widely known as a community hub which provides training, education and many social drop in sessions catering for all ages. Cam Community Centre runs some youth services from its unit provided by SOSYP.



### Things to consider?

When additional housing is built in Cam, what additional/enhanced services would you like to see?

Would you benefit from a faster broadband service?

Are you content relying on facilities in adjoining Dursley?

What facilities do you currently use?

Cam Parish Council Telephone: 01453 548884 Email [admin@camparishcouncil.gov.uk](mailto:admin@camparishcouncil.gov.uk) Web: [www.camparishcouncil.gov.uk](http://www.camparishcouncil.gov.uk)



# Community

## Recreation :Neighbourhood Development Plan One Plan. One Cam. One Voice.

Cam lies on the Cotswold escarpment and is surrounded by areas of outstanding natural beauty, meadows, hills, woods and numerous green spaces offering outstanding views. The extensive network of footpaths, snicket-ways and bridle paths is something Cam is very proud of but linking these to the green spaces within the community is vital too.

### Local Green Spaces

Cam Peak is an impressive and recognisable landmark of Cam. Along with Cam Long Down, it provides outstanding views of the surrounding countryside. They are also on the Cotswold Way providing a network of footpaths to explore the county of Gloucestershire on foot. Several trees in Cam are protected with tree preservation orders (TPO's). Other open spaces within Cam include Rackleaze Nature Reserve - a strip of unimproved wet grassland between Tesco and the River Cam and Holywell Orchard - an ancient orchard managed by Stroud Valleys Project. All these areas are used by recreational walkers, dog walkers, naturalists and families. Footpaths circling the Stinchcombe Hill golf course provide many beautiful views and open up the countryside to link the parish on the Cotswold way.



### Recreation

Within Cam there are many recreational opportunities available to its residents. Jubilee Playing fields is the largest park in the parish and provides inclusive play equipment, an excellent skate park, outdoor gym equipment, football pitches and coming soon, a new changing room facility that will be available for all to use. Another project being progressed, is the possible provision of another play area at Woodview Road, Cam on a piece of unused land.

There are further play areas at Woodfields and Cam Green, both sites provide play equipment for various ages of children. Many other sporting opportunities are provided such as cricket, tennis, bowls, running, football, dancing, golfing the list goes on.

Cam has 5 allotment sites containing nearly 100 plots across the parish and are available to rent annually from £14.00 per site. Cam is also fortunate to have a diverse selection of housing styles that represent its vibrant past with many listed buildings identified and protected for future years.



### Things to consider?

- Do you know of any sites of special interest that should be protected?
- Do you currently use any of these facilities?
- Do you think more recreational sites are needed in Cam and if so, what & Where would be your suggestion?
- How can we improve what we have?
- Do you know of any other areas in Cam that need to be included in the NDP?

Cam Parish Council Telephone:01453 548884 Email [admin@camparishcouncil.gov.uk](mailto:admin@camparishcouncil.gov.uk) Web: [www.camparishcouncil.gov.uk](http://www.camparishcouncil.gov.uk)

# Community

## Transport :Neighbourhood Development Plan One Plan. One Cam. One Voice.

It is recognised that a sustainable community should ideally have transport facilities that help people travel within and between communities by walking, cycling and using public transport. However there is a high reliance on the use of the car with almost 1.5 cars per household. The A4135 a primary traffic route bisects both Cam and Dursley, much of the road is only subject to a 40mph speed limit. Traffic surveys done on the A4135 indicates some 12,000 vehicles daily use this road.

### Public Transport

Within Cam most bus services link to Dursley and some divert via the Vale hospital and the railway station. The Cam Survey showed a general satisfaction with the bus routes but not with the frequency. There are public transport links to the neighbouring communities of Stroud, Stonehouse, Thornbury, Bristol, Berkeley, Wotton-Under-Edge and Gloucester.

### Cycling

The provision of the Cam & Dursley cycleway (renamed Greenway) will be instrumental in improving facilities for all forms of cycling, as well as providing other recreational benefits and wheelchair accessible. The proposed pathway will hopefully connect Uley to Dursley, Dursley to Cam, Cam to the railway station and eventually a link to Slimbridge and National Cycle Network Route 41.

### Rail

Good rail links north and south from the station provides good access to Bristol, Gloucester and intervening stations on a regular basis. A recent rail survey carried out at the train station indicated that it attracts more users from outside of the parish than currently reside here. Temple Meads and Filton stations were noted as the top destinations by rail users for commuting and educational reasons. The high use of this facility has caused problems with the parking situation and this has seen an increase recently in the creation of more spaces but these were quickly taken up. It is recognised that as the only train station that offers direct connections to Temple Meads in Bristol in the Stroud district, this problem is set to continue.



### Things to consider?

- New developments in Cam will have an impact of the local road network, what do you think could be done to make these safer for other road users?
- Do you worry about vehicle speeds?
- Would you welcome the concept of home zoning (a shared space for people instead of just motor traffic)?
- If bus services were more reliable, would you use them?
- Would you use the train if:
  - a) Links were improved?
  - b) Transport facilities were improved?
- What would encourage you to cycle more?

### Parking

On street parking creates road safety hazards for other users of the road and footway Adequate at home parking for residents and visitors is important.

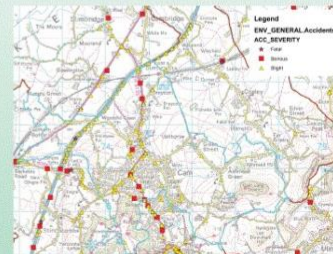
### Speed Limits

The County Council has stated that it does not wish to review speed limits within the Parish. In new housing developments street design is based on a maximum speed of 20 mph, in accordance with national advice.

Much of the rural network of roads in Cam is used by walkers and horse riders and the lanes are only the subject of the national speed limit of 60mph.

### Accidents

In the last ten years (to January 2013) there have been seven serious injury accidents in Cam, five of which occurred on the A4135.



Cam Parish Council Telephone:01453 548884 Email [admin@camparishcouncil.gov.uk](mailto:admin@camparishcouncil.gov.uk) Web: [www.camparishcouncil.gov.uk](http://www.camparishcouncil.gov.uk)



# Cammunity :Neighbourhood Development Plan

## Employment

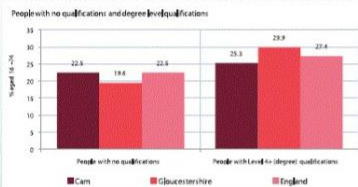
One Plan. One Cam. One Voice.

The NDP Steering Group would welcome the need for a balanced growth and diverse local economy for Cam, therefore, the extra housing must be led by a strong commercial investment for local employment.

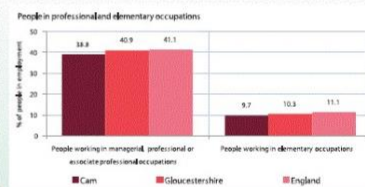
### Cam employment trends

Manufacturing, Retail and Health & Social work are the three main areas of employment to residents of Cam with 69% of employed residents travelling more than 4 miles to work every day.

Whilst it is recognised that most persons who are able to work manage to find work out of area, Cam is not a sustainable village for employment. With housing growth that is expected, more employment opportunities would be welcomed.



This diagram shows that the Cam/Dursley area has a higher proportion of the lowest skilled people when compared to the national and county average. It has 22.5% of its population with either no skills or only Level 1 qualifications (equivalent to one GCSE/O-level or nvq at any grade). By contrast, the proportion of Cam/Dursley's population with the highest level of qualifications is low – 25% at Levels 3 and 4/5 (Level 3 is equivalent to two or more A-levels, Level 4/5 equivalent to a first degree), compared to 27% nationally and 29.9% in the county.



Category	Cam	Gloucestershire	England
People with no qualifications	1,525	1,720	1,720
People with highest qualifications level 1	576	1,075	1,075
People with highest qualifications level 2	600	1,075	1,075
People with highest qualifications level 3	600	1,075	1,075
People with highest qualifications level 4	600	1,075	1,075
People with highest qualifications level 5	600	1,075	1,075

### Things to consider?

What type of jobs/employment do you think we should encourage into the area?

What can be done to help all ages get better access to employment?

What do you think can be done to improve the local economy?

The new large employment allocation is designated for Draycott at present, do you consider this the best location? If no, where do you think should be an alternative?

Do you think that there should be better training opportunities locally and if there was, would you use them?

Category	Cam	Gloucestershire	England
Managerial occupations	455	1,116	1,116
Professional occupations	1,116	1,116	1,116
Associate professional occupations	536	1,116	1,116
Elementary occupations	490	1,116	1,116
Elementary occupations	385	1,116	1,116



Cam Parish Council Telephone: 01453 548884 Email admin@camparishcouncil.gov.uk Web: www.camparishcouncil.gov.uk

# Cammunity :Neighbourhood Development Plan

## Housing in Cam

One Plan. One Cam. One Voice.

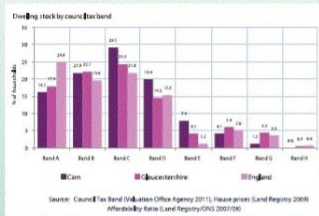


### Housing in Cam

Of the 3628 houses in the parish of Cam, 35% are detached houses which is significantly above the national average of 22%.

There is a higher amount than the national average of houses in the C, D & E council tax band categories suggesting that developers prefer to build more expensive, more profitable houses rather than homes in band A, which is at 16% and below the national average of 24% for lower cost homes.

66% of the population have no children under the age of 18 living at home but evidence shows that there has been an increase of 20-34 year olds still residing with parents or house sharing. This is believed to be due to high property prices and high rents making saving for a deposit much more difficult.



### Things to consider?

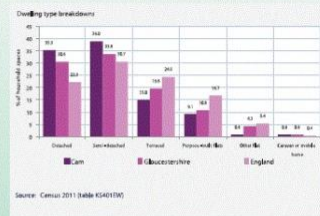
Should we encourage more affordable housing/housing association homes to be built?

Should we encourage more sustainable/Eco friendly homes to be built?

Should we be promoting dedicated 'retirement communities' with 1 or 2 beds to be built to enable elderly homeowners to downsize to a suitable space?

How do you think your housing needs will change in the next 20 years?

Should we encourage building 1 or 2 bed houses and bungalows?



Cam Parish Council Telephone: 01453 548884 Email admin@camparishcouncil.gov.uk Web: www.camparishcouncil.gov.uk